

## Lighting and Accessories

### Polar/Solar Plus™ Outdoor Extension Cord

UL Listed—meets OSHA requirements for outdoor use. America's premier extension cord, Polar/Solar Plus is lightweight and stays flexible to -67°F. All Polar/Solar Plus Extension Cords feature a power indicator light in the female receptacle to show that the power is on. Made in USA.



1688



Item #	Code	Wire GA/Cond.	Wire Type	Length (ft.)	125 V Rating	Stock*
1687	ECC	12/3	SJEOW	25	15A	Y
1688	ECC	12/3	SJEOW	50	15A	Y
1689	ECC	12/3	SJEOW	100	15A	Y
1788	ECC	10/3	SJEOW	50	15A**	Y
1789	ECC	10/3	SJEOW	100	15A**	A

\*\*Cap and connector rated 15A

### Cord Runner/ Multi-Outlet Cord

UL Listed. Power where you need it with three evenly spaced lighted outlets. Outlet covers help keep water and dust out. Outdoor rated. Suitable for job sites, workshops, and outdoor everyday usage.



Item #	Code	Wire GA/Cond.	Wire Type	Length (ft.)	125 V Rating	Stock*
9003-ECC	ECC	12/3	STW	50	15 A	Y

### Vinyl Outdoor Extension Cord

All Purpose Cords

UL Listed—meets OSHA requirements for outdoor use. Vinyl jacket resists moisture, abrasion, and prolonged exposure to sunlight.



2588

Item #	Code	Wire GA/Cond.	Wire Type	Length (ft.)	125 V Rating	Stock*
2407	ECC	14/3	SJTW	25	13 A	Y
2408	ECC	14/3	SJTW	50	15 A	Y
2588	ECC	12/3	SJTW	50	15 A	Y
2589	ECC	12/3	SJTW	100	15 A	Y
2689	ECC	12/3	SJTW	100	15 A	Y

\*Y = stock item; A = readily available by order



### Heavy-Duty Industrial Cord Reel

- 15-amp circuit breaker with push button reset
- Clear molded Tri-Source with power indicator light
- Cord reel can be detached from mounting bracket without the use of tools
- Large circular stopper helps lock the cord in position and keeps it from fully retracting into the reel



Item #	Code	Wire GA/Cond.	Wire Type	Length (ft.)	125 V Rating	Stock*
4920-ECC	ECC	12/3	SJTW	50	15 A	Y

### Polar/Solar Plus™ Tri-Source® Three-Way Power Block

High Impact Power Block with T\*Prene® Insulation and Power Indicator Light

UL Listed—meets OSHA requirements for outdoor use. Plug in up to three tools in this unique female receptacle that also features a power indicator light to show that the power is on.



3482



Item #	Code	Wire GA/Cond.	Wire Type	Length (ft.)	125 V Rating	Stock*
3482	ECC	12/3	SEOW	2	15 A	Y
3487	ECC	12/3	SJEOW	25	15 A	Y
3488	ECC	12/3	SJEOW	50	15 A	Y
3489	ECC	12/3	SJEOW	100	15 A	Y

### Trouble Lights - Polar/Solar® Cord

Item #	Code	Description	Wire GA/Cond.	Wire Type	Length (ft.)	125 V Rating	Stock*
5857	ECC	Metal Guard with Outlet	16/3	SJE0	25	13 A	Y



05857



## Lighting and Accessories

### Cord-O-Lite™ Light String with Metal Cages

Durable outdoor/indoor lighting system accommodates A-23 bulbs up to 150 watts. UL Listed, NEC Compliant and meets OSHA requirements.



Item #	Code	Wire GA/Cond.	Wire Type	Length (ft.)	125 V Rating	Stock*
7538-ECC	ECC	12/3	SJTW	50	15 A	Y

### 4-Prong Generator Adapter

Convert standard generator NEMA configurations to maximize job-site power and performance. "Y" adapters convert one L14-30 plug to two lighted 5-20 receptacles.

- Oil and chemical resistant jacket and durable, flexible and abrasion resistant cord
- Clear lighted female end with power indicator light
- Reinforced blades help prevent accidental bending or breaking
- Heavy-duty strain relief protects electrical connections resulting in longer cord life



Item #	Code	Wire GA/Cond.	Wire Type	Length (ft.)	125/250 V Rating	Stock*
1934	ECC	10/4 to 10/3	STOW	50	20 A	Y

### Twist-To-Lock Adapter

- Constructed with heavy-duty 12-gauge wire and molded locking male and female connectors
- Manufactured with stranded conductors, bright yellow jacket and solid molded plugs for longer life
- Industry Approvals: UL Listed



Item #	Code	Wire GA/Cond.	Wire Type	Description	125 V Rating	Stock*
9020	ECC	12/3	STW	Female Twist-to-Lock: converts (1) NEMA 5-15 plug to (1) NEMA L5-20 receptacle	15 A	Y
9021	ECC	12/3	STW	Male Twist-to-Lock: converts (1) NEMA L5-20 plug to (1) NEMA 5-15 receptacle	15 A	Y

\*Y = stock item; A = readily available by order



### Ground Fault Circuit Interrupter

Item #	Code	Wire GA/Cond.	Wire Type	Length (ft.)	125 V Rating	Stock*
<b>In-Line Tri-Source™ GFCI, 120V/1800W</b>						
2841	ECC	12/3	SJEOW	2.5	15 A	Y
<b>Right Angle GFCI Extension Cords with Molded Tri-Source® - Three-Way Power Block</b>						
2832	ECC	12/3	SJEOW	2	15 A	Y



### Replacement Cap and Connector

Item #	Code	Description	Stock*
5984	ECC	All Vinyl, Large Dead Front, Male Cap, 3-Wire, Yellow Vinyl 15-Amp, 5-15P	Y
5985	ECC	All Vinyl, Large Dead Front, Female Connector, 3-Wire, Yellow Vinyl 15-Amp, 5-15P	Y

### Anti-Automatic Restart Protection Safety Cord



#### SENSING-SAF-START®

Easy to install and inexpensive solution to the OSHA anti-automatic restart requirement, without the high cost of magnetic motor starters.

Sensor will not allow the SENSING-SAF-START to reset until the equipment switch has been turned off.

Item #	Code	Description	Stock*
1996	MQB	120V AC - 15 Amp - 50/60 Hz	Y

We also carry a wide assortment of



**GENERATORS**  
see pages 117-120

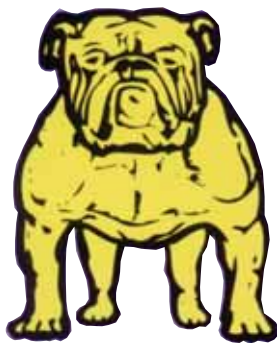


**PUMPS**  
see pages 121-122



**PORTABLE HEATERS**  
see page 114

- **Sales**
- **Rental**
- **Service**

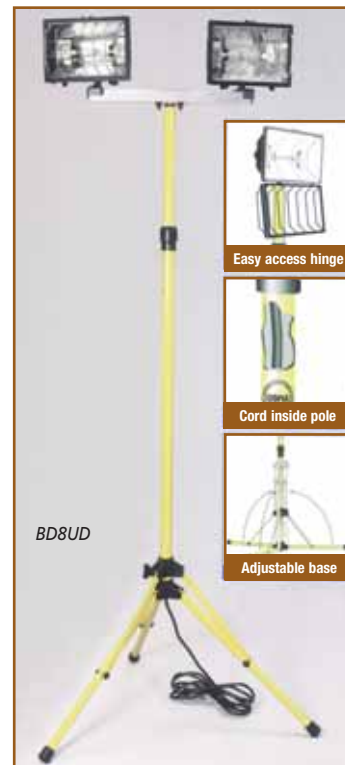


**Bull Dog® Power Products**

**4' to 8' Telescopic Light Tower**

- Twin 500 W weatherproof fixtures
- Two on/off switches operate each light independently
- Each fixture is independently adjustable to 240°
- 16-gauge, 15' heavy-duty cord
- Lights up to 10,000 sq. ft.
- Power: 120 V-60 Hz
- Amps: 8.4

Item #	Code	Description	Stock*
BD8UD	BUL	Telescopic Light Tower	Y



BD8UD



BD1000MH

**1000 Watt Single Metal Halide Portable Light Cart**

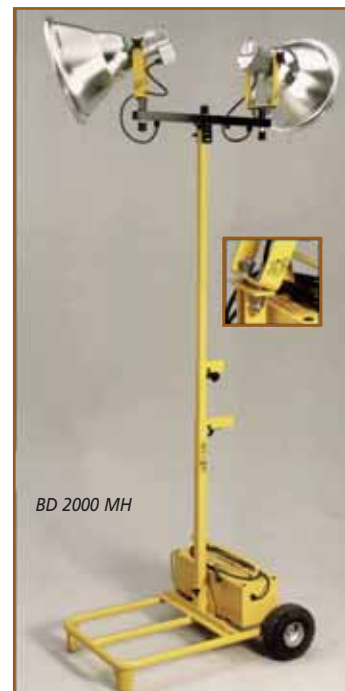
- Lights up to 82,000 sq. ft.
- Lumen Output: 110,000
- Power: 120 V-60 Hz; 8.4 amps
- Extends from 7' to 12.5'

Item #	Code	Description	Stock*
BD1000MH	BUL	1000 W Single Portable Light Cart	Y

**2000 Watt Dual Metal Halide Portable Light Cart**

- Lights up to 164,000 sq. ft.
- Lumen Output: 220,000
- Power: 120 V-60 Hz; 16.7 amps
- Fixtures swivel 360° for lighting vast areas
- Sets up in less than a minute, extends from 2' to 12.5' in seconds

Item #	Code	Description	Stock*
BD 2000 MH	BUL	2000 W Dual Portable Light Cart	A



BD 2000 MH

## Portable Lighting



### 1,000 Watt Halogen Convertible Light Tower

- Approximately 8' telescoping tripod stand
- Adjustable leg for leveling on uneven surfaces
- Two 500 W halogen bulbs with spare bulb in protective holder
- Removable light rack easily converts into a portable fixture
- Separate switches provide two light levels: 500 and 1,000 watts
- Tempered glass lens with metal safety grill
- Unique stabilizing head bracket
- Durable powder coat finish



Item #	Code	Description	Stock*
SL1006	BYO	500 W Double Halogen Light Tower	Y

### 500 Watt Halogen Work Light

- 500 W Halogen bulb with spare bulb included
- Tempered glass lens with metal safety grip
- Closed "V" handle for nonslip grip
- Larger housing for durability and wider base for tip-over stability
- Durable powder coat finish



Item #	Code	Description	Stock*
SL1003	BYO	500 W Single Halogen Work Light	Y

### 500 W Halogen Bulb



Item #	Code	Description	Stock*
7880	ECC	500 W Halogen Replacement Bulb	Y

- MAIL ORDERS
- PHONE ORDERS

WILL BE HANDLED PROMPTLY AND ACCURATELY.

You can help us fill your orders correctly by using item numbers and the name of the product, along with referring to page numbers in this catalog.

## Batteries

### Rayovac® Ultra Pro™ Alkaline Batteries

Engineered for professional use



Item #	Code	Description	Stock*
AL-AA	RAY	AA 1.5 Volt Battery	Y
AL-AAA	RAY	AAA 1.5 Volt Battery	Y
AL-C	RAY	C 1.5 Volt Battery	Y
AL-D	RAY	D 1.5 Volt Battery	Y
AL-9V	RAY	9 Volt Battery	Y
6VHD	RAY	6 Volt Lantern Battery	Y

## Industrial Fans



### Direct Drive Portable Blower

- Motor Single phase, 120 V, ball bearing, permanently lubricated PSC-type motor with rocker switch on fan housing
- Cord 12' long, 3-conductor, SJT type
- Blade Steel hub and spider with steel paddles
- Guard Powder coated spiral steel wire guards

Meets Federal OSHA requirement. 1-year limited warranty.

Item #	Code	Blade Size	Motor HP	CFM High	CFM Low	Amps High	Stock*
PB36D	TPI	36"	1/3	12,500	9,000	5.5	Y
PB42-D	TPI	42"	1/2	15,600	15,600	6.0	A

\*Y = stock item; A = readily available by order

## Industrial Fans



### 18" Industrial Floor Fan

All Metal Construction & Totally Enclosed Motor

Motor 3-speed, 1/8 hp, single phase, 120 V, sleeve bearing, permanently lubricated, permanent split capacitor motor with rotary switch

Cord 10' long, 3-conductor, SJT type

Meets Federal OSHA requirements. 1-year limited warranty.

Item #	Code	Blade Size	CFM High	CFM Med.	CFM Low	Amps High	Stock*
F18HTE	TPI	18"	5,750	4,700	3,200	2.2	A
F18TE	TPI	18"	5,750	4,700	3,200	2.2	Y

### 30" High-Performance Circulator

High performance 1/3 hp motor runs 15-18% cooler than standard 1/4 hp motors and allows fan to continue operating in air temperatures up to 135°F.

Motor 2-speed, 1/3 hp, single phase, 120 V, totally enclosed, ball bearing, permanent split capacitor motor with pull chain switch; 3-year warranty

Cord 18' long, 3-conductor, SJT type

Blade Steel hub and spider with aluminum paddles

Guard Chrome plated, double locking, steel wire guards

Meets Federal OSHA requirements.



Item #	Code	Description	CFM High	CFM Low	Amps High	Stock*
IHP30H	TPI	30" Fan	8,200	6,200	3.4	Y
ACMP	TPI	52"-82" Pedestal	—	—	—	Y

## Portable Ventilation



### 8" Blower with Canister

The eight inch plastic COM-PAX-IAL blower with canister and 25' ducting is lightweight and with the quick-connect clipping system, which allows workers to attach the canister, tools-free, to the input side for powerful extraction or output side for ventilation.

- Free air: 831 cfm / (1) 90° bend: 709 cfm / (2) 90° bends: 586 cfm
- 1/3 hp, 3 amp, 115 V
- Ducting stores conveniently within the canister
- Built-in carry handles and built-in on/off switch

Item #	Code	Description	Stock*
9533-25	ALG	8" AC COM-PAX-IAL Plastic Blower w/Canister & 25' Ducting	Y



### 12" Metal Blower System

All in one unit features a 12" metal blower system with 15' duct built into a heavy-duty polyester bag. Designed with zippered ends that allow blower use without removing blower from the bag. Zipper openings allow for plug/cord inlet and outlet. Polypropylene nine blade fan, steel/powder coated housing and grill, carry handle with molded-in 2-speed switch.

- Free air: 1,800 cfm
- 1/2 hp, 3.8 amp, 115V AC/120V
- 35 lb.
- Single-ply, lightweight, vinyl/polyester PVC-coated ducting

Item #	Code	Description	Stock*
9535-12	ALG	12" Blower w/15' Duct	Y

### Statically Conductive Ducting

Lightweight and retractable duct is designed for maximum air handling capabilities with dual direction flow and low friction loss, while providing a safe positive means of discharging static build-up. The single ply ducting is designed with vinyl and polyester materials and a neoprene coating, which create a temperature resistance up to 250°F. This ducting is integrated with extended solid grounding wire at each end and meets ASTM Specs and UL-94-VO requirements. It is rated to 1000,000 OHMS or less per square inch.



Item #	Code	Description	Stock*
9550-15	ALG	15' length x 12" diameter	Y

## Grease Guns

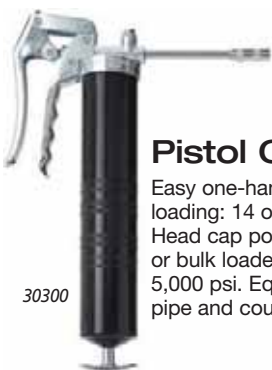


### General Purpose Grease Gun

A hard-working, entry-level model with professional features. Two-way loading: 14 oz. cartridge or suction. Durable baked enamel finish. Includes 5 3/8" pipe and coupler.



05-445



30300

### Pistol Grease Gun

Easy one-hand operation. Two-way loading: 14 oz. cartridge or bulk load. Head cap port for adding air bleeder or bulk loader fitting. Develops up to 5,000 psi. Equipped with 3 1/2" grease pipe and coupler.



30-415



30-425

### Heavy-Duty Pistol Grease Gun

Convenient one-handed operation. Three-way loading: 14 oz. cartridge, bulk or suction. Head cap port for adding air bleeder or bulk loader fitting.



30475

### Heavy-Duty Lever Grease Gun

Heavy-duty grease gun for automotive professionals. Variable/short stroke for easy use in confined areas. Air bleeder and bulk loader fitting for 3-way loading (14 oz. cartridge, bulk or suction).

Item #	Code	Description	Stock*
05-445	PLE	General Purpose Grease Gun	A
30300	PLE	Pistol Grease Gun	Y
30-415	PLE	Heavy-Duty Pistol Grease Gun with 12" Flex Hose	A
30-425	PLE	Heavy-Duty Pistol Grease Gun with 5" Pipe	A
30475	PLE	Heavy-Duty Lever Grease Gun	Y

### Moly EP Grease

Contains extreme pressure (EP) additives to reduce scuffing, scoring and seizure with high loads. 14 oz cartridge.



11355



05-037

### Grease Injector Needle

Lubricates in very tight places such as universal joints and sealed bearings.

05-055



### 90° Grease Coupler

For hard-to-reach grease fittings. Ideal for lubrication of late model front wheel drive vehicles.



10212

### Standard Duty Whip Hoses

For use on hand-operated grease guns only. 12" length.

Item #	Code	Description	Stock*
11355	PLE	14 oz. Moly EP Grease	Y
10212	PLE	12" Grease Gun Hose	Y
05-037	PLE	Grease Injector Needle	A
05-055	PLE	90° Grease Coupler	A

### Lincoln Industrial 18V Cordless Grease Gun

The 18 volt li-ion PowerLuber features an LCD display that indicates grease dispensed, cartridge level, charge level and more.

Its 18 volt, high-amperage, lithium-ion battery provides superior run time, and its two-speed design delivers outstanding flow and pressure.

The grease gun's LED lights up fittings when under equipment or in shaded areas. The PowerLuber offers dual motor protection with its self-resetting thermocouple. The grease gun features a 36" hose with spring guard for maximum accessibility and comes in a heavy-duty carrying case.



Item #	Code	Description	Stock*
1844	LIN	18 V Cordless Grease Gun	Y



### CRC General Purpose Lithium Grease

A high purity, NLGI Grade 2 lithium based grease. Provides superior lubrication and durability in any weather and most temperatures. It is a versatile grease designed for light duty applications requiring a long grease life. Will not break down or run out. 14 oz. cartridge.

Item #	Code	Description	Stock*
SL3310	CRC	14 oz. Lithium Grease	Y

# Tapes



## Duct Tape

Item #	Code	Description	Size	Stock*
4137	TPE	Heavy-duty, contractor grade duct tape; excellent conformability	2" x 60 yd.	Y
6700-TPE	TPE	Standard duct tape has poly coated cloth backing; good conformability	2" x 60 yd.	Y
6900-TPE	TPE	Economy duct tape has poly coated cloth tape; good tensile strength	2" x 60 yd.	Y
DUCT-3	TPE	Economy duct tape has poly coated cloth tape; good tensile strength	3" x 60 yd.	Y



## Masking Tape

Item #	Code	Description	Stock*
UT73-1	TPE	1" x 60 yd.	Y
UT73-2	TPE	2" x 60 yd.	Y



## Blue Painter's Tape

Item #	Code	Description	Stock*
PT14-36	TPE	1" x 60 yd.	Y
PT14-38	TPE	2" x 60 yd.	Y



## Strapping Tape

Strong, flexible polypropylene film for moisture and abrasion resistance. Reinforced with uni-directional fiberglass filaments.



Item #	Code	Description	Stock*
91404-TPE	TPE	1" x 60 yd.	Y

## General Purpose Vinyl Electric Tape

Black, PVC electrical insulation tape with a 7-mil backing. UL listed.



Item #	Code	Description	Stock*
UT602	TPE	.75" x 66'	Y

## PRODUCTS NOT LISTED?

All of the products we sell are not listed in this catalog. If you don't find everything you need, PLEASE CALL US—WE CAN HELP!



## PTFE Thread Tape

Contractor Grade

- Thickness: 3 mil
- Provides a highly resistant seal on pipe threads for all types of service
- Nontoxic



Item #	Code	Description	Size	Stock*
44082	MK	PTFE Thread Tape	1/2" x 300"	Y



## Gorilla Tape

Made to stick to rough, uneven, unforgiving surfaces like wood, stone, stucco, plaster, brick and more.

- Double thick adhesive grips smooth, rough and uneven surfaces
- Heavy-duty cloth backing for added strength and heft
- Rugged outer shell withstands moisture, UV rays and temperature extremes better than other tapes

Item #	Code	Description	Size	Stock*
GORILLA-TAPE	GOR	Gorilla Tape	1.8" x 35 yd.	Y

\*Y = stock item; A = readily available by order

## Hoses



### Black Rubber Water Suction Hose with couplings

Tube: EPDM  
 Reinforcement: Fiber, 4 spiral, 2- or 4-ply and helical wire  
 Temperature: -10°F to 180°F

Item #	Code	Description	Max. Oper. Pressure	Stock*
1.5X20RS	HOS	1½" x 20' Black Rubber Suction Hose	125 psi	Y
2X20RS	HOS	2" x 20' Black Rubber Suction Hose	125 psi	Y
3X20RS	HOS	3" x 20' Black Rubber Suction Hose	100 psi	Y
4X20RS	HOS	4" x 20' Black Rubber Suction Hose	75 psi	Y



### Clear PVC Water Suction Hose

Tube: Flexible PVC  
 Reinforcement: Rigid PVC helix  
 Temperature: -13°F to 140°F

Item #	Code	Description	Max. Oper. Pressure	Stock*
2X20RS-CLR	HOS	2" x 20' Clear PVC Hose	65 psi	Y



### PVC Water Discharge Hose

Tube: Black Pliovic® compound  
 Reinforcement: Synthetic fabric  
 Cover: Grey Pliovic® compound  
 Temperature: -10°F to 150°F (-23°C to 65°C)

Item #	Code	Description	Max. Oper. Pressure	Stock*
1.5X50D	HOS	1½" x 50' PVC Discharge Hose	75 psi	Y
2X50D	HOS	2" x 50' PVC Discharge Hose	60 psi	Y
3X50D	HOS	3" x 50' PVC Discharge Hose	50 psi	Y
4X25D	HOS	4" x 25' PVC Discharge Hose	45 psi	Y
4X50D	HOS	4" x 50' PVC Discharge Hose	45 psi	Y



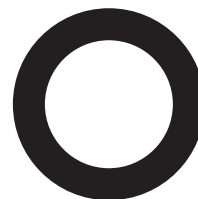
### Water Suction/Discharge Hose Kit

- Pin lug, brass couplings
- Includes 20' suction hose, 50' discharge hose and strainer

Item #	Code	Hose Size	Stock*
HOSEKIT2	HOS	2"	Y
HOSEKIT3	HOS	3"	Y

### Washer for Suction, Long and Short Shank Coupling

Rubber



Item #	Code	Size	Stock*
KRW20	DIX	1½"	Y
KRW25	DIX	2"	Y
KRW30	DIX	2½"	A
KRW35	DIX	3"	Y
KRW40	DIX	4"	Y
KRW50	DIX	5"	A
KRW60	DIX	6"	Y
KRW80	DIX	8"	A

### Hot/Cold Pressure Washer Hose

JGB Eagleflex II 5800 is specially designed for use on pressure washer machines with working pressures up to 5,800 psi and temperatures up to 310°F and has a 4-to-1 safety factor.



Tube: Black nitrile RMA Class B  
 Reinforcement: Two wire braid  
 Cover: Black, neoprene, RMA class B wrapped texture finish  
 Temperature: Up to 310°F

Item #	Code	Description	Stock*
AEF-20102-GGG-602	HOS	¾" x 50' Pressure Washer Hose	Y

\*Y = stock item; A = readily available by order



## Hoses

### Air Hoses



Item #	Code	Description	Stock*
38X50AH-PVC	HOS	3/8" x 50' PVC Hose w/Male Ends	Y
12X50AH-PVC	HOS	1/2" x 50' PVC Hose w/Male Ends	Y
38X50AH-RUBR	HOS	3/8" x 50' Rubber Hose w/Quick Connect Fittings	Y
34X50AH	HOS	3/4" x 50' Jack Hammer Hose	Y

### Polyurethane Air Hose

with no couplings

- 40% lighter than other hoses
- Flexible in cold weather
- Resists kinking
- Reinforced hose protector for durability
- Swivel fitting to reduce twisting
- Superior resistance to lubrication oil and grease



Item #	Code	Description	Stock*
GRPU1450	HOS	1/4" x 50' Air Hose w/No Couplings	Y

### 6-Ply Rubber/Vinyl Water Hose

- 500 psi burst strength
- Double reinforced for commercial strength
- Heavy-duty metal couplings with O-ring for tight seals
- 5/8" x 50'

Item #	Code	Description	Stock*
29-58050	HOS	6-Ply Commercial Hose	Y

### 3-Tube Sprinkler/Soaker

- White stripes can be positioned up for sprinkling, down for soaking
- Brass couplings
- 5/8" x 50'

Item #	Code	Description	Stock*
27142	HOS	Sprinkler/Soaker Hose	Y



### Air Hose & Retractable Reel

- 3/8" x 100' air hose
- 300 lb. working pressure
- Manual rewind

Item #	Code	Description	Stock*
HC38100-ORS	HOS	3/8" Air Hose w/Reel	Y

### Flexilla® Air Hose

Premium Hybrid Polymer Air Hose

- Extreme all-weather flexibility—40°F to 150°F
- Kink resistant when pressurized
- 1/4" NPT fittings
- 300 psi working pressure



Item #	Code	Description	Stock*
HFZ3850YW2-D	HOS	3/8" x 50' Air Hose w/Quick Connect Fittings	Y

### Propane Hoses

- Tube: Black, Type C Nitrile  
 Reinforcement: High tensile synthetic textile cord  
 Cover: Black Type A Neoprene  
 Temperature: -40°F to +180°F continuous service

Warning: Do not convey LP Gas over 140°F (60°C)

Item #	Code	Description	Stock*
LP14	HOS	1/4" Hose Cut To Size	A
LP38	HOS	3/8" Hose Cut To Size	Y
LP12	HOS	1/2" Hose Cut To Size	A



### Heavy-Duty Rubber Water Hose

- 3/4" x 50'

Item #	Code	Description	Stock*
34X50BW	HOS	Heavy-Duty Rubber Hose	Y

## Hose Fittings

Item numbers in red are stock parts; all others are readily available by order.

### Boss-Lock Type A Adapter *Male Adapter x Female NPT*

Size	Code	Aluminum	Aluminum Hard Coat	Brass	Unplated Malleable Iron	Plated Malleable Iron	Stainless Steel
2"	DIX	200A-AL	200-A-ALH	200-A-BR	200-A-MI	200-A-PM	200-A-SS
2½"	DIX	250-A-AL	—	250-A-BR	—	—	200-A-SS
3"	DIX	300A-AL	300-A-ALH	300-A-BR	300-A-MI	300-A-PM	300-A-SS
4"	DIX	400-A-AL	400-A-ALH	400-A-BR	400-A-MI	400-A-PM	400-A-SS
5"	DIX	500-A-AL	—	500-A-BR	500-A-MI	—	500-A-SS
6"	DIX	600-A-AL	600-A-ALH	600-A-BR	—	600-A-PM	600-A-SS



### Boss-Lock Type F Adapter *Male Adapter x Male NPT*

Size	Code	Aluminum	Aluminum Hard Coat	Brass	Unplated Malleable Iron	Plated Malleable Iron	Stainless Steel
2"	DIX	200F-AL	200-F-ALH	200-F-BR	200-F-MI	200-F-PM	200-F-SS
2½"	DIX	250-F-AL	—	250-F-BR	—	—	200-F-SS
3"	DIX	300F-AL	300-F-ALH	300-F-BR	300-F-MI	300-F-PM	300-F-SS
4"	DIX	400-F-AL	400-F-ALH	400-F-BR	400-F-MI	400-F-PM	400-F-SS
5"	DIX	500-F-AL	—	500-F-BR	500-F-MI	—	500-F-SS
6"	DIX	600-F-AL	600-F-ALH	600-F-BR	—	600-F-PM	600-F-SS



### Boss-Lock Type B Cam and Groove Coupler *Female Coupler x Male NPT*

Size	Code	Aluminum Item #
2"	DIX	AB200
2½"	DIX	AB250
3"	DIX	AB300
4"	DIX	AB400
6"	DIX	AB600



### Boss-Lock Type D Cam and Groove Coupler *Female Coupler x Female NPT*

Size	Code	Aluminum Item #
2"	DIX	AD200
2½"	DIX	AD250
3"	DIX	AD300
4"	DIX	AD400
5"	DIX	AD500
6"	DIX	AD600



### Type D Cam and Groove Coupler *Female Coupler x Female NPT*

Size	Code	Aluminum Item #
2"	DIX	200D-AL
3"	DIX	300D-AL
4"	DIX	400-D-AL
5"	DIX	500-D-AL
6"	DIX	600-D-AL
8"	DIX	800-D-AL



### Type B Cam and Groove Coupler *Female Coupler x Male NPT*

Size	Code	Aluminum Item #
2"	DIX	200B-AL
3"	DIX	300B-AL



### Cam and Groove Gasket *Buna-N*



Size	Code	Aluminum Item #
1½"	DIX	150-G
2"	DIX	200G-BU
2½"	DIX	250-G
3"	DIX	300-G
4"	DIX	400-G
5"	DIX	500-G
6"	DIX	600G-BU



\*Y = stock item; A = readily available by order

## Hose Fittings



**Air King Universal Coupling Hose End**

Item #	Code	Size	Material	Stock*
AMH	DIX	3/8"	Malleable Iron	A
AM1	DIX	1/2"	Malleable Iron	Y
AM5	DIX	5/8"	Malleable Iron	A
AM6	DIX	3/4"	Malleable Iron	Y
AM11	DIX	1"	Malleable Iron	A



**Air King Universal Coupling Male NPT End**

Item #	Code	Size	Material	Stock*
AMB1	DIX	1/4"	Malleable Iron	A
AMB	DIX	3/8"	Malleable Iron	Y
AM2	DIX	1/2"	Malleable Iron	Y
AM7	DIX	3/4"	Malleable Iron	Y
AM12	DIX	1"	Malleable Iron	Y



**Air King Universal Coupling Female NPT End**

Item #	Code	Size	Material	Stock*
AMC1	DIX	1/4"	Malleable Iron	A
AMC	DIX	3/8"	Malleable Iron	Y
AM3	DIX	1/2"	Malleable Iron	Y
AM8	DIX	3/4"	Malleable Iron	Y
AM13	DIX	1"	Malleable Iron	Y

**Air King Universal Coupling Triple Connection**



Item #	Code	Material	Stock*
AM10	DIX	Malleable Iron	Y

**Air King Standard Safety Clip**



Item #	Code	Description	Stock*
AC1	DIX	Safety Clip	Y

**Air King Washer**

- Same size for all coupling sizes
- Rubber temperature range: -20°F to 160°F



Item #	Code	Description---	Stock*
AWR4	DIX	Black Rubber Washers	Y

**Air King Clamp**



Item #	Code	Size	Hose O.D.'s From:	To:	Torque (ft. lbs.)	Material	Stock*
A4	DIX	1/2"	1"	1 1/2 64"	6	Malleable Iron	A
A9-DIX	DIX	3/4"	1 8/64"	1 20/64"	12	Malleable Iron	Y
A14	DIX	1"	1 32/64"	1 52/64"	21	Malleable Iron	A

ASK US FOR COMPLETE SPECIFICATIONS AND PRICES!

**Air Chief Automotive Interchange Quick-Connect Plug**



**Female Pipe Thread**

Item #	Code	Body Size	NPT Size	Flow Rating at 100 PSI	Material	Stock*
DCP8	DIX	3/8"	1/4"	70 CFM	Steel	Y
DCP6	DIX	3/8"	3/8"	70 CFM	Steel	Y
DCP624	DIX	3/8"	1/2"	70 CFM	Steel	A
DCP1823	DIX	1/2"	3/8"	150 CFM	Steel	A
DCP18	DIX	1/2"	1/2"	150 CFM	Steel	A

**Male Pipe Thread**



Item #	Code	Body Size	NPT Size	Flow Rating at 100 PSI	Material	Stock*
DCP7	DIX	3/8"	1/4"	70 CFM	Steel	Y
DCP5	DIX	3/8"	3/8"	70 CFM	Steel	A
DCP1703	DIX	1/2"	3/8"	70 CFM	Steel	A
DCP17	DIX	1/2"	1/2"	150 CFM	Steel	A

**Air Chief Automotive Interchange Quick-Connect Coupler**

**Female Pipe Thread**

*Semi-Automatic Pull Sleeve to Connect*



Item #	Code	Body Size	NPT Size	Flow Rating at 100 PSI	Material	Stock*
DC2	DIX	1/4"	1/4"	37 CFM	Brass	A
DC223	DIX	1/4"	3/8"	37 CFM	Brass	A
DC8	DIX	3/8"	1/4"	70 CFM	Steel	A
DC6	DIX	3/8"	3/8"	70 CFM	Steel	Y

**Male Pipe Thread**

*Semi-Automatic Pull Sleeve to Connect*



Item #	Code	Body Size	NPT Size	Flow Rating at 100 PSI	Material	Stock*
DC103	DIX	1/4"	3/8"	37 CFM	Brass	A
DC7	DIX	3/8"	1/4"	70 CFM	Steel	A
DC5	DIX	3/8"	3/8"	70 CFM	Steel	Y

## Hose Fittings

### Air Chief Industrial Interchange Quick-Connect Coupler



#### Female Pipe Thread



Item #	Code	Body Size	NPT Size	Flow Rating at 100 PSI	Material	Stock*
DC20	DIX	1/4"	1/4"	37 CFM	Brass	Y
DC2023	DIX	1/4"	3/8"	37 CFM	Brass	Y
DC2622	DIX	3/8"	1/4"	70 CFM	Steel	Y
DC26	DIX	3/8"	3/8"	70 CFM	Steel	Y

#### Male Pipe Thread

Semi-Automatic Pull Sleeve to Connect



Item #	Code	Body Size	NPT Size	Flow Rating at 100 PSI	Material	Stock*
DC21	DIX	1/4"	1/4"	37 CFM	Brass	Y
DC2103	DIX	1/4"	3/8"	37 CFM	Brass	Y
DC2502	DIX	3/8"	1/4"	70 CFM	Steel	A
DC25	DIX	3/8"	3/8"	70 CFM	Steel	Y

### Air Chief Industrial Interchange Quick-Connect Plug

#### Female Pipe Thread



Item #	Code	Body Size	NPT Size	Flow Rating at 100 PSI	Material	Stock*
DCP20	DIX	1/4"	1/4"	37 CFM	Steel	Y
DCP2023	DIX	1/4"	3/8"	37 CFM	Steel	Y
DCP2622	DIX	3/8"	1/4"	70 CFM	Steel	Y
DCP26	DIX	3/8"	3/8"	70 CFM	Steel	Y
DCP2624	DIX	3/8"	1/2"	70 CFM	Steel	A
DCP1823	DIX	1/2"	3/8"	150 CFM	Steel	A

#### Male Pipe Thread



Item #	Code	Body Size	NPT Size	Flow Rating at 100 PSI	Material	Stock*
DCP21	DIX	1/4"	1/4"	37 CFM	Steel	Y
DCP2103	DIX	1/4"	3/8"	37 CFM	Steel	Y
DCP2502	DIX	3/8"	1/4"	70 CFM	Steel	Y
DCP25	DIX	3/8"	3/8"	70 CFM	Steel	Y

### Brass Ferrule



Fluid Ferrule



Air Ferrule for light hose



Air Ferrule for medium hose

Item #	Code	Ferrule ID	Length	End Hole Size	Metal Gauge	Stock*
<i>Ferrule for Air – for light weight hose</i>						
BFL500	DIX	.500"	1/2"	11/32"	.016"	Y
BFL575	DIX	.575"	31/64"	15/32"	.019"	Y
<i>Ferrule for Air – for medium weight hose</i>						
BFM478	DIX	.478"	11/16"	21/64"	.024"	Y
BFM562	DIX	.561"	1"	7/16"	.024"	Y
BFM593	DIX	.593"	1"	7/16"	.024"	Y
BFM625	DIX	.625"	1"	7/16"	.024"	Y
BFM656	DIX	.656"	1"	7/16"	.024"	Y
BFM718	DIX	.718"	1"	5/8"	.024"	Y
BFM781B	DIX	.718"	1"	1/2"	.024"	Y
BFM812	DIX	.812"	1"	5/8"	.024"	Y
<i>Ferrule for Fluid – for medium weight hose</i>						
BFW875	DIX	.875"	.844"	.688"	.024"	Y
BFW900	DIX	.900"	.844"	.688"	.024"	Y

### 3-in-1 Manifold



Item #	Code	Inlet Thread (1)	Outlet Thread (3)	Stock*
D3404	DIX	1/4" NPT	1/4" NPT	Y
D3406	DIX	3/8" NPT	1/4" NPT	Y

### Brass Air Ball Valve



Item #	Code	Size	Stock*
BBV25	DIX	1/4" Female NPT x Female NPT	A
BBV38	DIX	3/8" Female NPT x Female NPT	Y
BBV50	DIX	1/2" Female NPT x Female NPT	A
BBV75	DIX	3/4" Female NPT x Female NPT	Y
BBV100	DIX	1" Female NPT x Female NPT	A
BBV125	DIX	1 1/4" Female NPT x Female NPT	A
BBV150	DIX	1 1/2" Female NPT x Female NPT	A
BBV200	DIX	2" Female NPT x Female NPT	A

\*Y = stock item; A = readily available by order

## Hose Fittings

### Reusable Hose Fitting Male Fitting



Item #	Code	Hose ID/OD	NPTF Thread	Stock*
BN32RU62	DIX	3/8" / 5/8"	1/4"	Y

### Brass Tire Inflator Chuck



Item #	Code	Description	Stock*
D104	DIX	1/4" NPT Female Thread	Y

### Brass Mender



Item #	Code	Hose Size	Stock*
BM4	DIX	1/2"	Y

### Brass Hose Barb Male Insert



Item #	Code	Hose ID	NPTF Thread	Stock*
BN22	DIX	1/4"	1/4"	Y
BN32	DIX	3/8"	1/4"	Y
BN33	DIX	3/8"	3/8"	Y
BN42	DIX	1/2"	1/4"	Y

### Steel Hose Mender



Item #	Code	Size	Stock*
DMA	DIX	1/4"	A
DMB	DIX	3/8"	A
DM1	DIX	1/2"	Y
DM5	DIX	5/8"	A
DM6	DIX	3/4"	Y



Female NPTF Hose Barb

Male NPTF Hose Barb

### Brass Push-On Fitting National Pipe Tapered - Dryseal

Item #	Code	Hose ID	NPTF Thread	Stock*
<b>Female NPTF x Push-on Hose Barb</b>				
BPF43	DIX	1/2"	3/8"	Y
<b>Male NPTF x Push-on Hose Barb</b>				
BPN22	DIX	1/4"	1/4"	Y
BPN33	DIX	3/8"	3/8"	Y
BPN43	DIX	1/2"	3/8"	Y
BPN44	DIX	1/2"	1/2"	Y



### Non-Safety Brass Tip Blow Gun

Item #	Code	Description	Stock*
D201	DIX	1/4" NPT Female Inlet	Y



### Compact Air Regulator

Item #	Code	Size	CFM	Stock*
R16-03RH	DIX	3/8"	80.5	Y
R16-04R	DIX	1/2"	88	Y



### In-Line Lubricator

Item #	Code	NPT Size	Oil Capacity	Max. Working Pressure	Air Flow at 70 PSI	Stock*
PL400	DIX	3/4"	3.7 fl. ozs.	200 psig	70 scfm	A
PL400L	DIX	3/4"	11 fl. ozs.	300 psig	70 scfm	Y

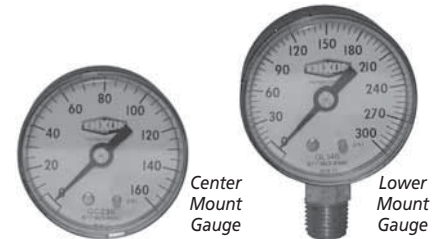


### Mini In-Line Lubricator

Item #	Code	Pipe Size Inlet	Pipe Size Outlet	Stock*
ML200M	DIX	1/4" NPT Female	1/4" NPT Male	Y
ML300M	DIX	3/8" NPT Female	3/8" NPT Male	Y



### Standard Dry Gauge



Center Mount Gauge

Lower Mount Gauge

Item #	Code	Description	PSI	Stock*
GL135	DIX	1/4" Lower Mount Gauge w/2" Face	0-200	Y
GL140	DIX	1/4" Lower Mount Gauge w/2" Face	0-300	A
GC235	DIX	1/4" Center Mount Gauge w/2" Face	0-200	Y
GC240	DIX	1/4" Center Mount Gauge w/2" Face	0-300	A
GC610	DIX	1/8" Center Mount Gauge w/1 1/2" Face	0-60	Y
GC620	DIX	1/8" Center Mount Gauge w/1 1/2" Face	0-160	A

### Wilkerson Airline Filter

- 5 micron element
- Transparent 1-qt. bowl with guard
- Automatic drain
- Maximum operating conditions: 150 psig; 32°-125°F

F16-04A



F3006A

Item #	Code	Size	SCFM	Description	Stock*
F16-04A	DIX	1/2"	80.4	Compact Filter w/5 oz. bowl	Y
F3006A	DIX	3/4"	316	Jumbo Filter w/1 qt. bowl	Y

\*Y = stock item; A = readily available by order

## Hose Fittings



### King Short Shank Suction Coupling, NPSM Thread

Female - Aluminum with Brass Swivel Nut

Item #	Code	Size	Stock*
FAB150	DIX	1½"	A
FAB200	DIX	2"	Y
FAB250	DIX	2½"	A
FAB300	DIX	3"	Y
FAB400	DIX	4"	A
FAB600	DIX	6"	A

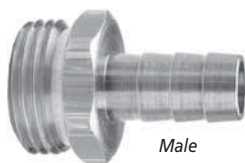


Male

Item #	Code	Size	Stock*
MA150	DIX	1½"	A
MA200	DIX	2"	Y
MA250	DIX	2½"	A
MA300	DIX	3"	Y
MA400	DIX	4"	A
MA600	DIX	6"	A



Female



Male

### GHT Thread Short Shank Fitting

Item #	Code	Description	Stock*
BCF75	DIX	5/8" Female with Swivel Nut - Brass	Y
BCF76	DIX	3/4" Female with Swivel Nut - Brass	Y
BCM73	DIX	3/8" Male - Brass	Y
BCM75	DIX	5/8" Male - Brass	Y
BCM76	DIX	3/4" Male - Brass	Y



GHY



GHYV

### GHT Twin Valve Garden Hose Fitting

Item #	Code	Description	Stock*
GHY	DIX	Twin Outlet - Powder-coated Zinc	Y
GHYV	DIX	Twin Outlet/Twin Shut-off Valves - Powder-coated Zinc	Y

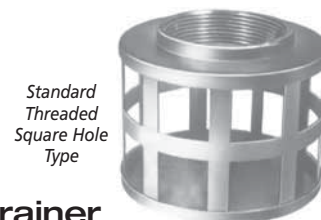
### Washers and Gaskets



Item #	Code	Description	Stock*
TRW7	DIX	White Rubber GHT Garden Hose Washer	Y
TVS7-30	DIX	Vinyl Garden Hose Gasket w/Stainless Steel Screen	Y



Standard Threaded Round Hole Type



Standard Threaded Square Hole Type

### Zinc Plated Steel Strainer

Code	Size	Standard Threaded Round Hole Type	Stock*	Standard Threaded Square Hole Type	Stock*
		Item #		Item #	
DIX	1½"	RHS20	A	SHS20	A
DIX	2"	RHS25	Y	SHS25	Y
DIX	2½"	RHS30	A	SHS30	A
DIX	3"	RHS35	Y	SHS35	Y
DIX	4"	RHS40	A	SHS40	Y

### Zinc Plated Steel Top Skimmer



Item #	Code	Description	Stock*
DST35	DIX	3" Round Hole Type	Y

### Thermoplastic Constant Flow Fog Nozzle



Item #	Code	Size	Thread	90° Spray GPM @ 100 PSI	Stock*
CFB150NST	DIX	1½"	NST (NH)	75	Y
CFB2015S	DIX	2"	SIPT (NPSH)	75	Y



SN75



CSN75

### Water Nozzle

Item #	Code	Description	Stock*
CSN75	DIX	Pistol-Grip Water Nozzle	Y
SN75	DIX	Insulated Water Nozzle	Y

## Hose Fittings



### Center Punch Band Clamp

Pre-formed (Style F)

- Galvanized steel
- 5/8" band width



Item #	Code	ID	Thickness	Stock*
FS4	DIX	1"	.025	Y
FS5	DIX	1 1/4"	.025	Y
F6	DIX	1 1/2"	.031	Y
FS8	DIX	1"	.031	Y
F10	DIX	2 1/2"	.031	Y
F12	DIX	3"	.031	Y
F14	DIX	3 1/2"	.031	Y
F16-DIX	DIX	4"	.031	Y
F18	DIX	4 1/2"	.031	Y
F20	DIX	5"	.031	Y
F28	DIX	7"	.031	Y



### Band Clamp Hand Tool

Item #	Code	Description	Stock*
F100	DIX	Tool for application of 3/8" and 5/8" band clamps	A

## Pipe Fittings



### Carbon Steel Pipe Nipple

Threaded Both Ends



Item #	Code	Male NPT Size	Overall Length	Stock*
TN150X4	DIX	1 1/2"	4"	Y
TN200X4	DIX	2"	4"	Y
TN200X6	DIX	2"	6"	Y

PLEASE VISIT US—  
SEE OUR INVENTORY

\*Y = stock item; A = readily available by order

## Adhesives



### 3M™ Hi-Strength 90 Spray Adhesive

High Strength, Fast Contact

Fast contact strength buildup for many decorative laminates. Only needs one minute of drying time.



Item #	Code	Description	Stock*
21200	MMM	16.75 oz.	Y

### 3M™ Super 77 Multipurpose Spray Adhesive

High Tack, High Coverage

Fast drying for permanently attaching foils, carpeting, lightweight paper, cardboard, felt and cloth to painted or unpainted metals, wood and hardboard. Bonds quickly in 15 seconds.



Item #	Code	Description	Stock*
21210	MMM	17.6 oz.	Y

## SAF-T-LOK™ CHEMICAL CORPORATION

### Thread Sealing

HS - Hydraulic Sealant

- Excellent oil and fuel resistance
- No particles to clog orifices
- Withstands high pressure
- Fast cure



Item #	Code	Size	Stock*
26931	STL	1.7 oz.	N

### Threadlocking

T42 - Medium Strength/Removable

- Does not migrate on parts
- Fast cure and oil tolerant
- Locks nuts and screws
- Remove with normal tools
- Prevents vibration loosening
- Chemical resistant

T70 - High Strength/Permanent

- Locks studs to 1/2" diameter
- Very chemical resistant
- Eliminates vibration loosening
- Only removable by heat
- High break & prevailing strength
- Seals against corrosion



Item #	Code	Description	Size	Stock*
24231-STL	STL	T42 Blue Threadlocking	1.7 oz.	N
27031	STL	T70 Red Threadlocking	1.7 oz.	N

## Paint Marker Applicator Tools



### Traffic Machine

Seymour's Stripe Traffic Marking Machine (Z-604) is designed exclusively for Stripe Traffic Marker Paints. It is ready-to-use and requires no other accessories. The traffic marking machine can apply clean, even stripes or marks from 2" to 4" wide on porous surfaces ranging from concrete to asphalt.



### Marking Wand

Seymour's Stripe Marking Wand (Z-606) is easy loading, ready-to-use and requires no other accessories. It's 33" overall extension and light touch control makes marking simple and accurate and nickel zinc plating makes it durable and corrosion resistant.

Item #	Code	Description	Stock*
Z604	SEY	Traffic Marking Machine	Y
Z606	SEY	Marking Wand	Y

\*Y = stock item; A = readily available by order

## Paint Markers



### Stripe Traffic Marker

- Ideal for use on all roadway surfaces, parking lots, factories, warehouses or wherever traffic control markings are required
- Spray can and tip are designed to operate in an inverted position
- Long lasting, one pass coverage and nonclogging
- Applicator: use Seymour's Stripe Traffic Marking Machine (Z-604) to apply this product

Item #	Code	Description	Size	Stock*
20642	SEY	White Traffic Marker	20 oz.	Y
20646	SEY	Yellow Traffic Marker	20 oz.	Y
20647	SEY	Red Traffic Marker	20 oz.	A
20648	SEY	Handicap Blue Traffic Marker	20 oz.	A



### Stripe Inverted Tip Marker

- A fast drying, water-based marking paint designed to be sprayed in an inverted position
- Produces vivid marks, does not clog, and is safe for grass
- Meets APWA color standards and is VOC compliant
- Applicator: may be sprayed by hand or with the Z-605 marking gun or Z-606 marking wand

Item #	Code	Description	Size	Stock*
20652	SEY	White	20 oz.	Y
20653	SEY	Precaution Blue	20 oz.	A
20654	SEY	Red Fluorescent	20 oz.	Y
20655	SEY	Safety Green	20 oz.	Y
20657	SEY	Orange Fluorescent	20 oz.	Y
20658	SEY	Red/Orange Fluorescent	20 oz.	Y
20659	SEY	Light Blue	20 oz.	A
20663	SEY	Black	20 oz.	Y
20668	SEY	Green Fluorescent	20 oz.	A
20669	SEY	Blue Fluorescent	20 oz.	Y
20671	SEY	Safety Red	20 oz.	Y
20676	SEY	High Visibility Yellow	20 oz.	A
20678	SEY	Yellow	20 oz.	Y
20679	SEY	Hot Pink Fluorescent	20 oz.	Y



### Stripe Athletic Field Marker

Specially formulated for line striping athletic fields and engineered for use in an inverted position for quick and easy application.

Item #	Code	Description	Size	Stock*
20644	SEY	Athletic Field White	20 oz.	Y



### Stripe Solvent-base Marking Paint

A fast drying marking paint designed to be sprayed in an inverted position. Produces vivid marks, does not clog, and is safe for grass. The solvent-based formulation works well in low temperatures. Meets APWA color standards and is VOC compliant. May be sprayed by hand or with the Z-605 marking gun or Z-606 marking wand.

Item #	Code	Description	Size	Stock*
20631	SEY	Clear Marking Paint	20 oz.	Y



## PAINT



### Paint-All™ Enamel

Item #	Code	Description	Stock*
S04103-160Z	KRY	Red - 16 oz.	Y
S04106-160Z	KRY	Green - 16 oz.	Y
S04113-160Z	KRY	Gloss White - 16 oz.	Y



### Tough Coat™ Acrylic Enamel

- Tough, protective coating resists chipping and peeling
- Fast drying; dries to the touch in just 15 minutes
- Other colors available



Item #	Code	Description	Size	Stock*
01310-120Z	KRY	OSHA Yellow	12 oz.	Y
01770-120Z	KRY	OSHA Black	12 oz.	Y
03725-120Z	KRY	Semi-Flat Black	12 oz.	Y



### Rust Tough® Rust Preventative Acrylic Enamel

- One-coat coverage dries to touch in 25 minutes; dries to handle in 1 hour
- Indoor and outdoor use
- High gloss finish resists chipping and peeling
- Other colors available

Item #	Code	Description	Size	Stock*
00799-150Z	KRY	Gloss Black	15 oz.	Y



### Eco-Guard™ Latex Spray Paint

This latex (not water-reducible) paint provides high gloss, excellent color retention and appearance.

- Low odor
- Soap and water cleanup
- Dries to touch in 20 minutes or less

Item #	Code	Description	Stock*
K07908-160Z	KRY	Gloss Black - 16 oz.	Y

## Markers



### DURA-INK® 15

*Fine Tip*

- Smear-resistant, water-resistant, fast drying

Item #	Code	Color	Stock*
SHARPIE	MK	Black	Y



### DURA-INK® 20

*Retractable Bullet TIP*

- Push button operation
- Fast-drying, wear and water-resistant formula
- Industrial-grade fine bullet tip will not spread or mush
- Xylene-free formula

Item #	Code	Color	Stock*
96575	MK	Black	Y



### DURA-INK® 55

*Medium Chisel Tip*

- Contains low halogens
- Smear-resistant, water-resistant, fast drying

Item #	Code	Color	Stock*
BLACK.MARKER	MK	Black	Y



### Paint Marker

- Marks with real paint, dries in 3 minutes
- Nib releases paint as needed for continuous marking
- Marks on all surfaces including metal, wood, glass, plastic, rubber, cardboard and paper
- Lead-free, low halogens

Item #	Code	Color	Stock*
96820	MK	White	Y
96821	MK	Yellow	Y
96822	MK	Red	Y
96823	MK	Black	Y
96824	MK	Orange	Y
96825	MK	Blue	Y
96826	MK	Green	Y



### Soapstone Marker

- For the temporary marking of metal surfaces during welding and fabrication
- Made of all natural soapstone for superior marking
- Marks will not contaminate welds and are easily removed

Item #	Code	Color	Stock*
80129	MK	5" x 1/2" x 3/16" flat	Y

### China Marker

- For writing on glass, plastic, metal, wood, and china
- Moisture resistant
- Smooth writing
- High visibility colors
- Nontoxic pigments

Item #	Code	Color	Stock*
96010	MK	White	Y
96011	MK	Yellow	A
96012	MK	Red	A
96013	MK	Black	Y
96016	MK	Green	A



### Lumber Crayon #200

- Lead-free
- Weather-resistant, fade-resistant marks
- Use on cardboard, ceramics, concrete, lumber, metal, paper, plastic and rubber

Item #	Code	Color	Stock*
LCYELLOW	MK	Yellow	Y
LCRED	MK	Red	Y
80353	MK	Black	A
LCBLUE	MK	Blue	Y
80356	MK	Green	A



### Carpenter's Pencil

- Flat lead design
- Makes clean, accurate marks on wood and other surfaces

Item #	Code	Lead	Stock*
96927	MK	Hard	Y
96928	MK	Medium	Y



### Quick Stik® Marker

- Long lasting marks
- Smooth marking, fast drying paint marks dry in 5-7 minutes
- Bright, bold, fade-resistant
- Marks on virtually any surface

Item #	Code	Color	Stock*
61053	MK	Yellow	Y

## Corrosion Preventatives



### Tough Coat™ Primer

Item #	Code	Description	Size	Stock*
00341-160Z	KRY	Light Gray Sandable Primer	12 oz.	Y
00342-120Z	KRY	Red Oxide Sandable Primer	12 oz.	Y

### Red Insulating Varnish

- Penetrates thoroughly and forms a tough, flexible film
- High arc resistance and non-tracking properties
- Resists oil, water, acids, and alkalis
- Excellent adhesion
- Oil resistant per ASTM-D-115-55



Item #	Code	Description	Size	Stock*
00601-200Z	KRY	Red Insulating Varnish	20 oz.	Y

### Zinc-Rich Cold Galvanizing Compound

- Fast-drying, high-solids, high-performance, epoxy-based coating
- Fuses zinc to the metal substrate to protect against corrosion; equal to or better than hot-dipped galvanizing
- May be top-coated with conventional primers or finish coats



Item #	Code	Description	Size	Stock*
00740-140Z	KRY	Zinc Cold Galvanizing Compound	14 oz.	Y
74001-1G	KRY	Zinc Cold Galvanizing Compound	1 gallon	A

### Rust Fix® Rust Treatment

Rust Fix® destroys rust on contact by bonding and transforming it into a sandable and paintable surface. Sprays on clear and transforms into a black, metal protecting coating that prevents future rust from forming. Rust Fix saves you the time of sanding all the way down to bare metal and can be used with body filler and fiberglass.

Item #	Code	Description	Size	Stock*
RF129	KRY	Rust Fix	10.25 oz.	Y



### Green Rebar Epoxy

Specially formulated green epoxy primer designed for the touch-up of cut rebar to protect and extend its life cycle. It is durable, stops flash rusting, and can be top coated. Meets ASTM A775, D3963, and D3963M-01 performance requirements regarding the repair of defects in organic coatings for rebar. In order to pass ASTM B117 (salt fog) and ASTM G20 (chloride permeability), you must achieve a recommended film thickness of 5 mil (dry film).



Item #	Code	Description	Size	Stock*
16547	SEY	Green Rebar Epoxy Coating	16 oz.	Y



### RustSeal Paint Over Rust and Corrosion

KBS RustSeal is a superior, one-part, nonporous, ready-to-use, high-solid content, rust preventive coating. RustSeal completely seals metal surfaces, blocking all the pores and preventing moisture, oxygen and water vapor. It's actually strengthened by exposure to moisture, and it is impervious to road salts and most every chemical. RustSeal is VOC compliant and can be applied by brush, roller or spray.

Item #	Code	Description	Size**	Stock*
2400-KBS	KBS	AquaKlean Cleaner & Degreaser	Quart	Y
2500-KBS	KBS	AquaKlean Cleaner & Degreaser	Gallon	Y
3400-KBS	KBS	RustBlast Rust Remover	Quart	Y
3500-KBS	KBS	RustBlast Rust Remover	Gallon	Y
4401-KBS	KBS	RustSeal - Gloss Black	Quart	Y
4402-KBS	KBS	RustSeal - Satin Black	Quart	Y
4403-KBS	KBS	RustSeal - Silver	Quart	Y
4405-KBS	KBS	RustSeal - Grey	Quart	Y
4406-KBS	KBS	RustSeal - Oxide Red	Quart	Y
4407-KBS	KBS	RustSeal - Guardian Green	Quart	Y
4408-KBS	KBS	RustSeal - Off White	Quart	Y
4415-KBS	KBS	RustSeal - Galvanized Steel	Quart	Y
50001-KBS	KBS	System Sampler Kit - Gloss Black	—	Y
50002-KBS	KBS	System Sampler Kit - Satin Black	—	Y
5400-KBS	KBS	Gold Standard Tank Sealer	Quart	Y
6200-KBS	KBS	#1 Thinner	8 oz.	Y
70002-KBS	KBS	Epoxy Putty - Tan Numetal	—	Y
70003-KBS	KBS	Epoxy Putty - Black Numetal	—	Y
8401-KBS	KBS	Blacktop - Gloss Black	Quart	Y
8402-KBS	KBS	Blacktop - Satin Black	Quart	Y

\*\*Other sizes available

## Lubricants

### Moly Chain and Pin Bushing Lube

- Foaming action penetrates close tolerances of chain drive bushings and pins
- Specially formulated for all chain drive equipment
- Reduces wear, increases chain life up to three times when applied regularly
- Excellent as a protective coating for stored metal parts



Item #	Code	Description	Size	Stock*
S00202-160Z	KRY	Moly Chain & Pin Bushing Lube	16 oz.	Y

### WD-40

- **Cleans**  
WD-40 gets under dirt, grime and grease to clean. It also dissolves adhesives, allowing easy removal of labels, tape, stickers, and excess bonding material.
- **Displaces Moisture**  
Because WD-40 displaces moisture, it quickly dries out electrical systems to eliminate moisture-induced short circuits.
- **Penetrates**  
WD-40 loosens rust-to-metal bonds and frees stuck, frozen or rusted metal parts.
- **Lubricates**  
WD-40's lubricating ingredients are widely dispersed and hold firmly to all moving parts.
- **Protects**  
WD-40 protects metal surfaces with corrosion-resistant ingredients to shield against moisture and other corrosive elements.

**WD-40**



Item #	Code	Size	Stock*
110078	WD	11 oz.	Y
10110	WD	1 gallon	Y
10117	WD	5 gallon	A

### 3-IN-ONE Professional White Lithium Grease

This water and heat resistant formulation provides you with a long-lasting, heavy-duty lubricant in an aerosol can. The 3-IN-ONE Professional White Lithium Grease reduces friction while protecting against rust and corrosion. It sprays on evenly as a liquid, and sets up dry for a thick coating. It will not splatter, melt, run, wash off or freeze.

Item #	Code	Description	Stock*
10142	WD	White Lithium Grease	Y



\*Y = stock item; A = readily available by order

Utica 315-724-7119

Watertown 315-788-2612

Syracuse 315-671-4400

## LA-CO®

### Rust Buster™ Rust Penetrant

- Quickly loosens rusted bolts, screws, shafts, piping, and types of "frozen" connections and assemblies
- Contains no acids, alkali or other harmful ingredients
- Safe for skin, clothes, metals and friction-type surfaces
- The penetrant used by professional mechanics in industry and the military



Item #	Code	Description	Stock*
79706	MK	Rust Buster - 4 fl. oz.	Y

### Premium All-Purpose Thread Cutting Oil

- Two cutting oils in one
- For hand tools and high-speed thread cutting machines
- Use with steel, brass, copper, black iron, wrought iron and galvanized iron



Item #	Code	Description	Stock*
73413	MK	Thread Cutting Oil - 1 pt.	Y
72314	MK	Thread Cutting Oil - 1 gal.	Y

### Marvel Mystery Oil

#### Added to Gasoline

- Cleans and lubricates fuel injectors and carburetors
- Improves gasoline mileage
- Reduces and prevents varnish and gum build-up



#### Added to Engine Oil

- Prevents valve sticking and clatter
- Promotes easier cold weather starts
- Reduces and prevents acid and sludge formation



Item #	Code	Size	Stock*
MMO-Q	MQB	32 oz.	Y
MMO-G	MQB	1 gallon	Y



### Anti-Freeze Air Tool Lubricant Wintergrade

Specially formulated to protect and lubricate air tools and cylinders at temperatures below 40°F.

- Absorbs moisture from compressed air
- Frees stuck or frozen tools and keeps tools protected in storage

Item #	Code	Description	Stock*
DATL128W	DIX	AF Lubricant - 1 gallon	Y



# Industrial Cleaning Supplies

STOCKHAUSEN



**Solopol®**  
Hand Cleaner  
For heavy- or medium-duty cleaning. Out-cleans waterless hand cleaners. Solvent free.



**Stoko®**  
**Vario SVP**  
Dispenser accommodates 19 different products in 1,000 ml, 1,900 ml or 2,000 ml sizes. ADA bar may be purchased separately to retrofit the SVP dispenser to meet federal ADA regulations.

Item #	Code	Description	Stock*
98318706	STC	Solopol® Hand Cleaner - 2000 ml	Y
28980801	STC	Black Stoko® Dispenser	Y



## Lifter™ Wipes

- Pre-moistened, goes where soap and water can't—great for job sites where water isn't available
- Patented wipe fabric, absorbs dirt and grime, will not re-transfer dirt to the skin
- Dual surface towel—one side smooth for wiping, one side with "Grime Busting Fibers" for scrubbing



Item #	Code	Description	Stock*
72405	MK	Lifter Wipes - 70 Wipes	Y



## X60 Wipes

Reinforced wipes are tough enough for scrubbing and cleaning, yet soft enough for face and hands.



## X80 Wipes

Heavy-duty, reusable wipes absorb water and oil faster than laundered towels and will not scratch surfaces or disintegrate in solvents.



Item #	Code	Description	Stock*
34015KC	KC	X60 Wipes - 180 sheets	Y
41041KC	KC	X80 Wipes - 160 sheets	Y



## Big Orange Citrus Pumice Hand Cleaner

Big Orange hand cleaner is a heavy-duty hand cleaner that contains D-Limolene, a citrus based degreaser, and mineral oil to help condition skin. Big Orange hand cleaner contains a select grade of pumice scrubbers to scour away tough dirt – and leave a clean fresh citrus scent.



Item #	Code	Description	Stock*
R02001	REL	Big Orange Hand Cleaner - one gallon	Y



## Hand Pump

Item #	Code	Description	Stock*
HANDPUMP	REL	Fits 1-gallon cleaner	Y



## Degreaser Cleaner

Item #	Code	Description	Stock*
SSC-GAL	REL	Degreaser Cleaner - 1 gal.	Y
SSC-QT	REL	Degreaser Cleaner - 32 oz.	A

## Car Prep

A cleaning solvent cleaner for removing grease, wax, stains, rustproof overspray spots and glue. Excellent for wiping down vehicles as prep before painting.



Item #	Code	Description	Stock*
NEWCARPREP	REL	Car Prep - 32 oz.	A

## Pressure Washer Cleaner/Degreaser

Highly effective cleaner/degreaser, specially formulated to be low foaming, which allows maximum cleaner contact with the surfaces to be cleaned. It can be used with high or low psi pressure washers, steam cleaners, automatic scrubbers, pump sprayers, etc.

- Environmentally friendly, noncaustic, nontoxic formula
- Low odor



Item #	Code	Description	Stock*
A012070005	KRY	PW Cleaner/Degreaser - 5-gallon	Y

## Industrial Cleaning Supplies

### Trash Bags

Heavy-duty construction grade.



Item #	Code	Size	Thickness	Qty./Box	Stock*
TRASH.BAGS-10	POL	50-gallon	2 mil	10	Y
TRASH.BAGS-20	POL	42-gallon	3 mil	20	Y

### Sweeping Compound



Item #	Code	Description	Stock*
SWEEP100-WATERBASE	MQB	100 lb. Water-based Sweeping Compound	Y
SWEEP75	MQB	75 lb. No Sand Sweeping Compound	Y
SWEEP75-WAX	MQB	100 lb. Wax-based Sweeping Compound	Y

### Rock Salt Ice Melt Crystals

Item #	Code	Description	Stock*
ROCKSALT-50	ICE	50 Lb. Bag	Y



### Sodium/Magnesium Chloride Ice Melt

Item #	Code	Description	Stock*
BLIZZARDWIZARD-50	ICE	50 Lb. Bag	Y



## Insecticides

### True Value Green Thumb® Wasp & Hornet Killer

- 25' Jet spray kills on contact
- Kills wasps, hornets, yellow jackets, scorpions, mud daubers, tent caterpillars
- Kills wasps returning to nest
- Protects for up to four weeks
- Nonstaining



Item #	Code	Description	Stock*
596692	TRU	17.5 oz. can	Y

## Brooms, Brushes & Squeegees



### Sanitary Handle

Item #	Code	Size	Stock*
8560-PER	PER	60" Hardwood	Y



### Soft Sweep Push Broom

This specially formulated polypropylene fill is excellent for sweeping very fine and medium particles from resilient smooth floors, vinyl, linoleum, terrazzo, marble, tile, finished wood and smooth concrete.

Item #	Code	Description	Stock*
2618	PER	18" - Blue	Y
2624-PER	PER	24" - Blue	Y

### Stiff Sweep Push Broom

This durable fill is excellent for sweeping heavy or coarse material and for removing difficult dirt and deposits from unfinished surfaces, wood, concrete, blacktop, etc.

Item #	Code	Description	Stock*
2518	PER	18" - White	A
2524	PER	24" - White	Y

\*Y = stock item; A = readily available by order

# Brooms, Brushes & Squeegees

## Street Broom Head



Item #	Code	Head/Trim Size	Description	Stock*
1516P-MB	MB	16"/6¼"	Fiber	Y
1616-MB	MB	16"/5"	Plastic	Y
3916-MB	MB	16"/3¾"	Steel Wire	Y

## Garage Broom Head



Item #	Code	Head/Trim Size	Description	Stock*
2218-MB	MB	18"/3"	Coarse Plastic	Y

## Line Floor Broom Head



Item #	Code	Head/Trim Size	Description	Stock*
818-MB	MB	18"/3"	Horsehair/Fiber Mix	Y
824-MB	MB	24"/3"	Horsehair/Fiber Mix	Y

## Fine Line Floor Broom Head



Item #	Code	Head/Trim Size	Description	Stock*
3718-MB	MB	18"/3"	Plastic	Y
3736-MB	MB	36"/3"	Plastic w/Bracket	Y

## Roof Brush Head



Item #	Code	Head Size or Trim	Description	Stock*
196-MB	MB	7" x 2½"	White Tampico	Y
196-T	MB	7" x 2½"	White Tampico w/ Threaded Hole	Y

## Concrete Finish Broom Head



Item #	Code	Head/Trim Size	Description	Stock*
2124-MB	MB	24"/3"	Black Polypropylene	Y
2136-MB	MB	36"/3"	Black Polypropylene	Y
2148-MB	MB	48"/3"	Black Polypropylene	Y

## Corn Broom



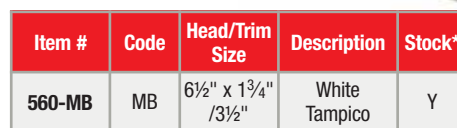
Item #	Code	Description	Stock*
5038-MB	MB	Heavy-duty Corn Broom	Y

## Counter Duster



Item #	Code	Head/Trim Size	Description	Stock*
58-MB	MB	9"/2"	Black Tampico	Y

## Mason Brush



Item #	Code	Head/Trim Size	Description	Stock*
560-MB	MB	6½" x 1¾" / 3½"	White Tampico	Y

## Acid Brush



Item #	Code	Head/Trim Size	Description	Stock*
44-MB	MB	20" x 3" / 2"	Fiber w/20" Handle	Y
70C-MB	MB	20" x 3" / 2"	Plastic w/20" Handle	Y

## Scratch Brush

Item #	Code	Rows/Wire Size	Description	Stock*
05755	SAI	3 x 19 / .012	SAIT Stainless Steel	Y



## Handle



Item #	Code	Description	Stock*
A60	MB	60" Wood Threaded Handle for Regular Line Floor Brushes	Y
C60-MB	MB	60" Wood Threaded Handle for Deck, Window & Roof Brushes, Squeegees, Street Brooms, etc.	Y
M60-MB	MB	60" Metal Threaded Handle for Regular Line Floor Brushes & Paint Rollers	Y

## Shoe Handle Wire Scratch Brush



Item #	Code	Head/Trim Size	Description	Stock*
4S-MB	MB	10" x 1" / 1½"	Wire Brush	Y
4SC-MB	MB	10" x 1" / 1½"	Wire Brush w/Scraper	Y

## Straight Squeegee



Item #	Code	Head	Description	Stock*
4124-TP	MB	24"	Black Rubber	Y
4130-TP	MB	30"	Black Rubber	Y
4136-TP	MB	36"	Black Rubber	Y

## Curved Squeegee



Item #	Code	Head	Description	Stock*
4624-TP	MB	24"	Black Rubber	Y
4636-TP	MB	30"	Black Rubber	Y



## Paint Sundry



### Paint/Chip Brush

- 100% white bristles
- Smooth sanded handle with tin ferrule
- Recommended for use with all paints

Item #	Code	Trim Size	Size	Stock*
231-MB	MB	1½"	1"	Y
232-MB	MB	1½"	1½"	Y
233-MB	MB	1½"	2"	Y
234-MB	MB	1½"	2½"	Y
235-MB	MB	1½"	3"	Y
236-MB	MB	2¼"	4"	Y



### Pro Paint Brush

- 100% white China bristles
- Smooth sanded handle with tin ferrule
- Recommended for use with oil based paints, varnishes, stains and enamels

Item #	Code	Size	Stock*
250-3-MB	MB	3" Beavertail	Y



### Pro Skipper Brush

- SRT polyester bristles
- Smooth sanded handle with tin ferrule
- Recommended for use with all paints

Item #	Code	Size	Stock*
252-1-MB	MB	1" Beavertail	Y
252-3-MB	MB	3" Beavertail	Y
253-1.5-MB	MB	1½" Angle Sash	Y

### Plastic End Cap

- Sold in pairs



Item #	Code	Size	Stock*
1800-112CAP-MB	MB	End Caps (pair)	Y



### Heavy-Duty Roller Cover

- 100% synthetic fiber attached to a 4-ply phenolic core backing

Item #	Code	Nap Size	Length	Stock*
9SC025-MB	MB	¼"	9"	Y
9SC038-MB	MB	⅜"	9"	Y
9SC050-MB	MB	½"	9"	Y
9SC075-MB	MB	¾"	9"	Y
18C038-MB	MB	⅜"	18"	Y
18C050-MB	MB	½"	18"	Y
18C075-MB	MB	¾"	18"	Y



### Heavy-Duty Roller Cover

- Chrome plated steel frame with 5-wire cage and reinforced handle socket
- Finger grip handle

Item #	Code	Size	Stock*
900-516	MB	9" Roller Frame	Y



### Adjustable Roller Frame

- Adjusts 12" to 18"
- Metal frame

Item #	Code	Size	Stock*
1800-1218MB	MB	Adjustable Roller Frame	Y



### Metal Paint Tray

Item #	Code	Size	Stock*
MET-100-MB	MB	9" Metal Tray	Y



### Plastic Paint Tray

Item #	Code	Size	Stock*
PET-100G-MB	MB	9" Plastic Tray	Y



### Industrial Plastic Paint Tray

Item #	Code	Size	Stock*
PET-1800-MB	MB	22" Plastic Tray	Y