

RENTAL

2025

Catalog



WE ARE YOUR TRUSTED SOLUTION SUPPLIER

When you don't feel purchasing is an option, rent the equipment you need to get the job done. Get rentals by the day, week, month or season.

We also offer "Rent-to-Own" plans...or you can purchase our rental equipment at reduced rates.

 **McQuade &
Bannigan Inc.**



Rental Rates

Rates are listed by Day, Week, and 4 Weeks.
Important: We charge for time out, not time used. All rental rates are FOB our dock.

Rental Deposit

A deposit of \$500 , payable by cash or credit card, is required at the time of rental.

Delivery and Pick-up Rates

Deliveries and pick-up are subject to the following rates:
0-25 miles.....\$75 one-way
Over 25 miles.....\$75 per hour from time of departure to time of return
Scaffold delivery.....\$75 per hour from time of departure to time of return

Trailer Rental w/ Equipment

\$50Daily Rate
\$150Weekly Rate
\$300Monthly Rate

Overtime Rate Schedule

For all rentals exceeding the normal 8-hour day / 40-hour week rental period, the following overtime rates will be applied:
8 Hours.....Daily Rate
40 Hours.....Weekly Rate
41 - 80 Hours.....1½ Times Weekly Rate
81 - 120 Hours.....2 Times Weekly Rate
121 - 175 Hours.....4-Week Rate
176 - 352 Hours.....1½ Times 4-Week Rate
176 - 352 Hours.....2 Times 4-Week Rate

Terms and Conditions

Additional rental policies can be found on the inside back page.

*Unfortunately, changes in manufacturing costs may occasionally cause our published prices to change without notice. These prices are limited to stock on hand. We reserve the right to correct typographical or pricing errors.
04.30.25

Table of Contents

Air Compressors 2

Air Hammers, Drills, & Chippers..... 2

Air Nailers & Staplers 2

Air Tool Accessories 2

Aluminum Staging Plank / Accessories 9

Baker Scaffold & Accessories 9

Blowers & Fans 7

Concrete Buckets, Screeds & Floats 5

Concrete Vibrators 4

Confined Space Safety Equipment 7

Core Drills 3

Cut Break Saws 3

Demolition Equipment..... 4

Diamond Blades & Core Bits 3

Drain Snakes 7

Drywall Sander & Vacuum..... 2

Excavators, Mini..... 8

Floor Preparation Equipment 5

Gas Engine Scrubbers 6

Gas Generators 6

Hammer Drills & Rotary Hammers 6

Hand-Held Cut-Off Saws 3

Heaters 6

Jahn Concrete Forming System..... 5

Lasers 4

Lifting / Moving Equipment..... 8

Light Towers 8

Masonry Table Saws & Tile Saws 3

Metal Bending Brake 6

Mixers 4

Outdoor Power Equipment 8

Plate Tampers, Rollers, Uprights & Reversibles 4

Post Hole Digger 8

Power Buggy 4

Power Trowels 5

Pressure Washers 7

Pumps & Accessories 7

Scaffolding 9

Telescoping Boom & Scissor Lifts 9

Utility Loader and Trencher..... 8

Walk-Behind Saws 3

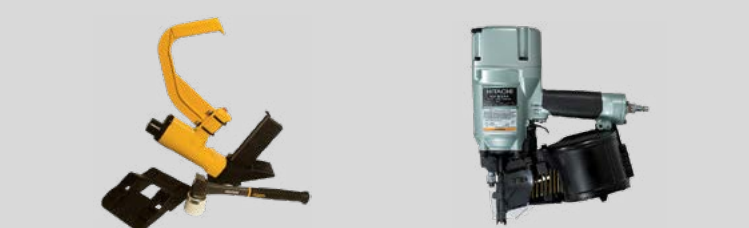
Wood Chippers..... 8

AIR COMPRESSORS



| Item # | Description | Day Rate | Week Rate | 4 Week Rate |
|--------|----------------------------|----------|-----------|-------------|
| IRAC# | Diesel Compressor (185cfm) | \$100 | \$300 | \$750 |
| GAC# | Gas Compressor (5HP) | \$35 | \$105 | \$315 |
| EAC1# | Portable Air Compressor | \$30 | \$90 | \$200 |

AIR NAILERS & STAPLERS



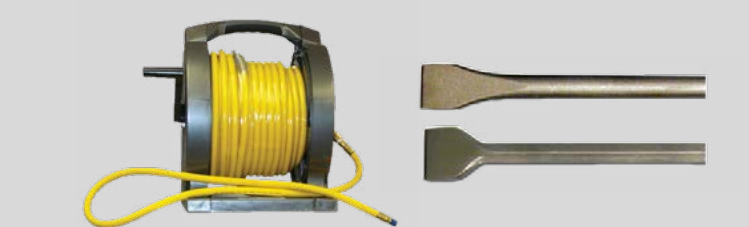
| Item # | Description | Day Rate | Week Rate | 4 Week Rate |
|--------|------------------------|----------|-----------|-------------|
| AN# | Air Nailer | \$30 | \$90 | \$200 |
| AS# | Air Stapler | \$30 | \$90 | \$200 |
| AS# | Hardwood Floor Stapler | \$35 | \$105 | \$300 |

AIR HAMMERS, DRILLS & CHIPPERS



| Item # | Description | Day Rate | Week Rate | 4 Week Rate |
|--------|-------------------|----------|-----------|-------------|
| AC# | 20 - 30LB Chipper | \$30 | \$90 | \$180 |
| PB40# | 40LB Hammer | \$45 | \$135 | \$300 |
| PB60# | 60LB Hammer | \$45 | \$135 | \$300 |
| PB80# | 80LB Hammer | \$55 | \$165 | \$350 |
| AD# | Air Drill (32A) | \$50 | \$150 | \$325 |
| LHC# | LH Air Chisel | \$33 | \$99 | \$270 |

AIR TOOL ACCESSORIES



| Item # | Description | Day Rate | Week Rate | 4 Week Rate |
|----------|-------------------|----------|-----------|-------------|
| AH38 | ¾” X 50’ Air Hose | \$4 | \$8 | \$20 |
| AH12 | ½” X 50’ Air Hose | \$4 | \$8 | \$20 |
| AH34 | ¾” X 50’ Air Hose | \$5 | \$15 | \$40 |
| AS-RA | Asphalt Cutter | \$8 | \$16 | - |
| (SIZE)DR | Drill Rod | \$10 | \$20 | - |
| MP | Point | \$5 | \$15 | - |
| 1C | 1” Chisel | \$5 | \$15 | - |
| 3C | 3” Chisel | \$6 | \$18 | |
| SCC | Supercut | \$6 | \$18 | |
| HITCH# | Pintle Hitch | \$5 | \$15 | \$45 |

Why Not Rent To Own?
Ask your sales representative
how today.

DRYWALL SANDER & VACUUM



| Item # | Description | Day Rate | Week Rate | 4 Week Rate |
|---|-----------------|----------|-----------|-------------|
| DWS# | Drywall Sander* | \$40 | \$120 | \$250 |
| DWV# | Drywall Vacuum* | \$35 | \$105 | \$225 |
| *Required vacuum bags and sanding discs sold separately | | | | |



sales@mqb.com
www.MQB.com

3



Utica, NY: 315•724•7119
Watertown, NY: 315•788•2612
Syracuse, NY: 315•671•4400

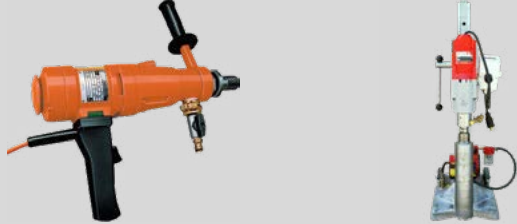
4

WALK BEHIND SAWS



| Item # | Description | Day Rate | Week Rate | 4 Week Rate |
|--------|----------------------------------|----------|-----------|-------------|
| FS18# | 18" Capacity, Push Saw | \$75 | \$225 | \$600 |
| FS20# | 14"-20" Capacity; Self-Propelled | \$100 | \$300 | \$800 |
| FS26# | 20"-26" Capacity; Self-Propelled | \$175 | \$525 | \$1,500 |
| FS65# | 30"-36" Capacity; Self-Propelled | \$200 | \$600 | \$1,800 |
| EFS# | 5HP Electric Floor Saw | \$75 | \$225 | \$675 |
| SCS# | Soff Cut Saw | \$125 | \$350 | \$600 |

CORE DRILLS



| Item # | Description | Day Rate | Week Rate | 4 Week Rate |
|--------|----------------------------------|----------|-----------|-------------|
| HCD# | Hand Core Drill | \$75 | \$225 | \$675 |
| CD# | Core Drill Rig | \$75 | \$225 | \$675 |
| CDV# | Vacuum Base (for Core Drill Rig) | \$15 | \$50 | \$175 |
| WT | Water Tank | \$5 | \$10 | \$30 |
| CBE | Core Extension Bits | \$5 | \$10 | \$30 |

CONCRETE VIBRATORS



| Item # | Description | Day Rate | Week Rate | 4 Week Rate |
|--------|--------------------------------|--------------|-----------|-------------|
| PV14# | Vibrator - Flex Shaft (7'-14') | \$40 | \$120 | \$330 |
| PV21# | Vibrator - Flex Shaft (21') | \$40 | \$120 | \$330 |
| BPV# | Back Pack Vibrator | \$65 | \$195 | \$540 |
| HV# | Handy Vibe (Isko) | \$45 | \$135 | \$375 |
| EXTSD | Extension Cords | \$5 each/day | | |

POWER BUGGY



| Item # | Description | Day Rate | Week Rate | 4 Week Rate |
|--------|---------------------|----------|-----------|-------------|
| PB2# | Ride On- Wheeled | \$150 | \$400 | \$1,200 |
| TPB2# | Tracked Swivel Dump | \$225 | \$600 | \$1,500 |

MASONRY TABLE SAWS & TILE SAWS



| Item # | Description | Day Rate | Week Rate | 4 Week Rate |
|--------|-----------------------------|----------|-----------|-------------|
| MTS# | 14" Masonry Table Saw - Gas | \$60 | \$180 | \$540 |
| MTS20# | 20" Masonry Table Saw - Gas | \$80 | \$240 | \$600 |
| TS# | Tile Saw (with blade) | \$60 | \$180 | \$500 |

CUT-N-BREAK SAWS



| Item # | Description | Day Rate | Week Rate | 4 Week Rate |
|--------|--------------------------|---------------------------|-----------|-------------|
| CNBG# | Gas Cut & Break Saw | \$125 | \$350 | \$650 |
| CNBE# | Electric Cut & Break Saw | \$125 | \$350 | \$650 |
| DB9# | 9" Diamond Blade | \$2.50/1000 TH | | |

DEMOLITION EQUIPMENT



| Item # | Description | Day Rate | Week Rate | 4 Week Rate |
|--------|----------------------------|----------|-----------|-------------|
| EC# | 20Lb Electric Chipper | \$40 | \$120 | \$300 |
| EPB# | 60Lb Electric Breaker | \$70 | \$210 | \$600 |
| CPB# | Milwaukee Cordless Breaker | \$70 | \$210 | \$600 |

LASERS



| Item # | Description | Day Rate | Week Rate | 4 Week Rate |
|----------|----------------------------------|----------|-----------|-------------|
| LL# | Laser Level, Rod-Eye & Bracket | \$75 | \$150 | \$400 |
| MGL# | Multi-Grade Laser Level, Rod-Eye | \$80 | \$250 | \$750 |
| IL# | Interior Red Light Laser | \$75 | \$225 | \$630 |
| TRI-POD# | Tripod | \$5 | \$15 | \$45 |

HAND-HELD CUT-OFF SAWS



| Item # | Description | Day Rate | Week Rate | 4 Week Rate |
|--------|----------------------|----------|-----------|-------------|
| ECS# | Electric Cut-Off Saw | \$50 | \$150 | \$315 |
| GCS# | Gas Cut-Off Saw | \$50 | \$150 | \$350 |

DIAMOND BLADES & CORE BITS



| Item # | Description | Day Rate | Week Rate | 4 Week Rate |
|-------------|-------------------------|---------------------------|-----------|-------------|
| DB14# | 14" Diamond Blade | \$2.50/1000 TH | | |
| DB20# | 20" & 26" Diamond Blade | \$3.50/1000 TH | | |
| DB30# | 30" & 36" Diamond Blade | \$6.00/1000 TH | | |
| DCB(-SIZE)# | Diamond Core Bits | Diameter x Depth x \$0.75 | | |

MIXERS



| Item # | Description | Day Rate | Week Rate | 4 Week Rate |
|--------|--|----------|-----------|-------------|
| MM8# | Mortar Mixer 9CF - Gas | \$100 | \$300 | \$600 |
| CM# | Concrete Mixer 6CF - Gas | \$100 | \$300 | \$600 |
| PCM# | Portable Concrete Mixer 3CF - Electric | \$40 | \$100 | \$300 |
| MM# | Mud Mixer | \$100 | \$300 | \$900 |

PLATE TAMPERS, ROLLERS, UPRIGHTS & REVERSIBLES



| Item # | Description | Day Rate | Week Rate | 4 Week Rate |
|--------|--------------------------------|----------|-----------|-------------|
| UT# | Upright Tamper | \$80 | \$240 | \$480 |
| PT1# | Vibratory Plate | \$80 | \$240 | \$600 |
| RPT1# | 20" Reversible Vibratory Plate | \$100 | \$300 | \$900 |
| RPT2# | 24" Reversible Vibratory Plate | \$150 | \$440 | \$1,200 |
| RPT4# | 28" Reversible Vibratory Plate | \$200 | \$600 | \$1,800 |
| ROR# | Ride On Roller | \$175 | \$525 | \$1,575 |



sales@mqb.com
www.MQB.com

5



Utica, NY: 315•724•7119
Watertown, NY: 315•788•2612
Syracuse, NY: 315•671•4400

6

CONCRETE BUCKETS, SCREEDS & FLOATS



| Item # | Description | Day Rate | Week Rate | 4 Week Rate |
|-----------|---|----------|-----------|-------------|
| BF# | Bull Float w/ 3 Handles | \$25 | \$50 | \$150 |
| CS2# | Magic Screed (Gas) Motor Unit | \$75 | \$225 | \$600 |
| CCS# | Milwaukee Cordless Screed | \$75 | \$225 | \$600 |
| SB(size)# | Screed Board: 6'-16' (2' increments) | \$30 | \$90 | \$270 |
| CB# | 1yd Concrete Bucket (Watertown Only) | \$75 | \$225 | \$600 |

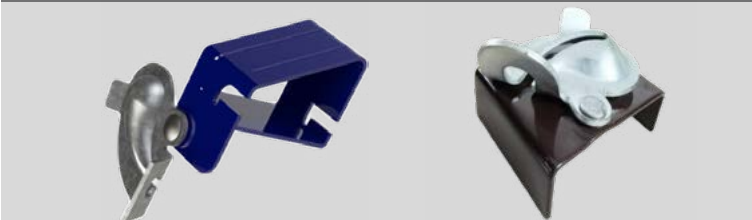
POWER TROWELS



| Item # | Description | Day Rate | Week Rate | 4 Week Rate |
|--------|---------------------------------|----------|-----------|-------------|
| T36# | 36" Trowel (blades additional) | \$75 | \$200 | \$600 |
| T46# | 46" Trowel (blades additional) | \$75 | \$200 | \$600 |
| FB | Trowel Finish Blades (set of 4) | \$30 | \$90 | - |
| FLB | Trowel Float Blades (set of 4) | \$30 | \$90 | - |
| CBRA | Combo Blades (set of 4) | \$30 | \$90 | - |

We are open
Mon - Fri: 7:00am - 5:00pm

JAHN CONCRETE FORMING SYSTEM



| Item # | Description | Day Rate | Week Rate | 4 Week Rate |
|--------|---------------------------|----------|-----------|-------------|
| JAC | Jahn "A" Bracket | - | \$0.20 | \$0.50 |
| JCC | Jahn "C" Bracket | - | \$0.20 | \$0.50 |
| TE | Jahn Tie Extenders | - | \$0.10 | \$0.20 |
| JB | Jahn Scaffolding Brackets | - | \$2.00 | \$5.00 |
| JCB | Jahn Corner Bracket | - | \$1.25 | \$3.00 |
| HP | Hair Pin Wedge | - | \$0.10 | \$0.20 |
| TB-RA | Turnbuckle Form Aligner | - | \$0.75 | \$2.00 |

CORDLESS REBAR TIER



| Item # | Description | Day Rate | Week Rate | 4 Week Rate |
|--------|---------------------|----------|-----------|-------------|
| CRT# | Cordless Rebar Tier | \$100 | \$300 | \$900 |

FLOOR PREPARATION EQUIPMENT



| Item # | Description | Day Rate | Week Rate | 4 Week Rate |
|--------|---------------------------------|----------|-----------|-------------|
| VR# | 100Lb Vinyl Roller | \$30 | \$75 | \$225 |
| EFB# | Electric Floor Buffer | \$40 | \$120 | \$360 |
| EFG# | Double Head Floor Grinder | \$100 | \$300 | \$540 |
| EFG2# | Single Head Floor Grinder | \$100 | \$300 | \$900 |
| EFG3# | 220v Single Head Floor Grinder | \$150 | \$450 | \$1,350 |
| DGS | Diamond Grinding Stones | \$125 | - | - |
| EFV# | Electric Floor Vacuum | \$100 | \$300 | \$900 |
| AFS# | Concrete Floor Scabbler - Air | \$200 | - | - |
| GS# | Concrete Scarifier - Gas | \$200 | - | - |
| BUR# | Concrete Burnisher | \$200 | \$600 | \$1,800 |
| HFS# | Hardwood Floor Sander | \$50 | \$200 | \$600 |
| HFE# | Hardwood Floor Edger | \$40 | \$150 | \$450 |
| HOS# | Hardwood Orbital Sander | \$65 | \$195 | \$585 |
| FS2# | Floor Stripper | \$40 | \$90 | \$270 |
| ERFS# | Electric Ride-On Floor Scrubber | \$150 | \$450 | \$1,250 |

HAMMER DRILLS & ROTARY HAMMERS



| Item # | Description | Day Rate | Week Rate | 4 Week Rate |
|---------------|---------------------------------|----------|-----------|-------------|
| ERH1# | SDS Rotary Hammer | \$25 | \$75 | \$150 |
| ERH2# | Spline or SDS Max Rotary Hammer | \$40 | \$120 | \$360 |
| MD# | Magnetic Base Drill | \$50 | \$150 | \$350 |
| SPLINE(-SIZE) | Spline Rotary Hammer Bits | \$10 | \$20 | - |
| SDS(-SIZE) | SDS Rotary Hammer Bits | \$10 | \$20 | - |

METAL BENDING BRAKE



| Item # | Description | Day Rate | Week Rate | 4 Week Rate |
|--------|---|----------|-----------|-------------|
| B1# | 8.5' Brake (26GA Galv. Steel, 21GA aluminum) | \$75 | \$200 | \$600 |
| B2# | 10.5' Brake (26GA Galv. Steel, 21GA aluminum) | \$85 | \$250 | \$750 |

GAS ENGINE SCRUBBERS



| Item # | Description | Day Rate | Week Rate | 4 Week Rate |
|--------|-----------------------|----------|-----------|-------------|
| GS5# | Gas Scrubber for 5HP | \$30 | \$90 | \$270 |
| GS13# | Gas Scrubber for 13HP | \$30 | \$90 | \$270 |
| GS20# | Gas Scrubber for 20HP | \$30 | \$90 | \$270 |

HEATERS



| Item # | Description | Day Rate | Week Rate | 4 Week Rate |
|--------|--------------------------|----------|-----------|-------------|
| EH1# | 5,100BTU; 110v Electric | \$20 | \$60 | \$180 |
| EH2# | 30,700BTU; 240v Electric | \$40 | \$120 | \$360 |
| KH1# | 110,000BTU Kerosene | \$27 | \$81 | \$225 |
| KH2# | 165,000BTU Kerosene | \$33 | \$99 | \$270 |
| KH3# | 350,000BTU Kerosene | \$50 | \$150 | \$400 |
| PH1# | 150,000BTU Propane/LP | \$33 | \$99 | \$250 |
| PH2# | 375,000BTU Propane/LP | \$45 | \$135 | \$360 |
| PH3# | 400,000BTU Propane/LP | \$55 | \$165 | \$500 |

DID YOU KNOW WE HAVE A
SERVICE DEPARTMENT?

We can repair your tools with a
satisfaction guarantee. We are a Stihl
Service Wrench certified location.

GENERATORS



| Item # | Description | Day Rate | Week Rate | 4 Week Rate |
|--------|---------------------------|----------|-----------|-------------|
| EUG2# | 2,000WATT Quiet Generator | \$50 | \$150 | \$400 |
| EUG3# | 3,000WATT Quiet Generator | \$70 | \$200 | \$600 |
| G5# | 5,000WATT | \$70 | \$200 | \$600 |
| G6# | 5,500WATT - 6,500WATT | \$80 | \$240 | \$700 |
| G10# | 10,000WATT | \$100 | \$300 | \$900 |
| G25# | 20 KW DIESEL TOW BEHIND | \$225 | \$675 | \$1950 |



sales@mqb.com
www.MQB.com

7



Utica, NY: 315•724•7119
Watertown, NY: 315•788•2612
Syracuse, NY: 315•671•4400

8

PRESSURE WASHERS



| Item # | Description | Day Rate | Week Rate | 4 Week Rate |
|--------|---|----------|-----------|-------------|
| CPW# | Cold Water Pressure Washer - Gas | \$60 | \$180 | \$450 |
| HPW# | Hot Water Pressure Washer - Gas or Electric | \$90 | \$270 | \$650 |
| TW# | Telescoping Wand | \$10 | \$30 | \$90 |
| PWTN | Spray Turbo Nozzle | \$10 | \$30 | - |
| PWH | 50' Pressure Washer Hose | \$8 | \$20 | \$50 |
| RSC# | Rotary Surface Cleaner | \$25 | \$75 | \$225 |

DRAIN SNAKES



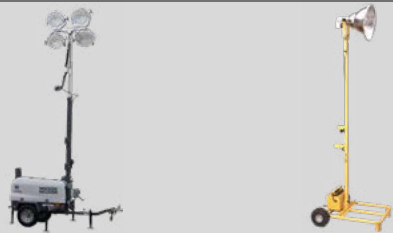
| Item # | Description | Day Rate | Week Rate | 4 Week Rate |
|--------|------------------------------|----------|-----------|-------------|
| DS1# | PowerVee 1 1/4" -3" Snake | \$25 | \$75 | \$225 |
| DS2# | Mini Rooter 2"-4" (No Roots) | \$40 | \$120 | \$360 |
| DS3# | Easy Rooter 4"-10" | \$60 | \$180 | \$500 |

OUTDOOR POWER EQUIPMENT



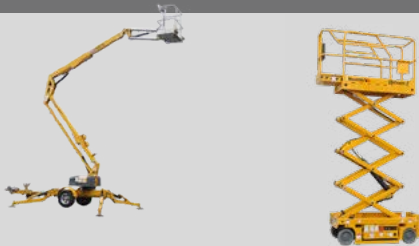
| Item # | Description | Day Rate | Week Rate | 4 Week Rate |
|--------|-----------------------------|----------|-----------|-------------|
| BPB# | Backpack Blower | \$40 | \$100 | \$300 |
| HHB# | Handheld Blower | \$20 | \$60 | \$120 |
| GBC# | Gas Brush Cutter | \$125 | \$375 | \$1175 |
| PS# | Stihl Power Broom (Sweeper) | \$60 | \$180 | \$480 |
| WBB# | Walk Behind Blower | \$60 | \$180 | \$540 |

LIGHT TOWERS



| Item # | Description | Day Rate | Week Rate | 4 Week Rate |
|--------|---|----------|-----------|-------------|
| IRLP# | Portable Light Plant / 8KW | \$110 | \$300 | \$900 |
| LP# | Single Light Tower (needs AC/generator) | \$30 | \$90 | \$225 |

TELESCOPING BOOM & SCISSOR LIFTS



| Item # | Description | Day Rate | Week Rate | 4 Week Rate |
|--------|------------------------------|----------|-----------|-------------|
| BL# | Telescopic Boom Lift - 37.5' | \$250 | \$750 | \$2,250 |
| AL# | Articulating Boom Lift - 45' | \$300 | \$900 | \$2,700 |
| AL55# | Articulating Boom Lift - 55' | \$350 | \$1,050 | \$3,150 |
| SL# | 19' Scissor Lift | \$150 | \$400 | \$800 |
| SL2# | 26' Scissor Lift | \$200 | \$600 | \$1,200 |

UTILITY LOADER AND TRENCHER



| Item # | Description | Day Rate | Week Rate | 4 Week Rate |
|--------|------------------------------------|----------|-----------|-------------|
| DING# | Dingo TX427 Narrow Track w/ Bucket | \$250 | \$750 | \$2,250 |
| DING2# | Dingo TX1000 Wide Track w/ Bucket | \$350 | \$1,000 | \$3,000 |
| TREN# | 6" x 36" Trencher | \$50 | \$150 | \$450 |
| DA9 | 9" Auger | \$50 | \$150 | \$450 |
| DA12 | 12" Auger | \$50 | \$150 | \$450 |
| DA15 | 15" Auger | \$50 | \$150 | \$450 |
| DA18 | 18" Auger | \$50 | \$150 | \$450 |
| DA24 | 24" Auger | \$50 | \$150 | \$450 |
| DEXT | 24" Extension | \$10 | \$30 | \$90 |

Attachment rates doubled when only renting attachment

PUMPS & ACCESSORIES



| Item # | Description | Day Rate | Week Rate | 4 Week Rate |
|--------|-----------------------------------|----------|-----------|-------------|
| EP2A# | 2" Submersible 115v Electric Pump | \$30 | \$90 | \$200 |
| TP2# | 2" Trash Pump - Gas | \$40 | \$120 | \$350 |
| TP3# | 3" Trash Pump - Gas | \$50 | \$150 | \$450 |
| TP6# | 6" Diesel Tow Behind | \$350 | \$1000 | \$2500 |
| DP3# | 3" Diaphragm Pump - Gas | \$50 | \$150 | \$450 |
| TP4# | 4" Trash Pump - Gas | \$75 | \$225 | \$675 |
| 2DH | 2" x 50' Discharge Hose | \$5 | \$15 | \$40 |
| 3DH | 3" x 50' Discharge Hose | \$10 | \$30 | \$60 |
| 4DH | 4" x 50' Discharge Hose | \$10 | \$25 | \$75 |
| 6DH | 6" x 25' Discharge Hose | \$20 | \$60 | \$150 |
| 2SH | 2" x 20' Suction Hose | \$10 | \$30 | \$60 |
| 3SH | 3" x 20' Suction Hose | \$10 | \$30 | \$60 |
| 4SH | 4" x 20' Suction Hose | \$20 | \$35 | \$90 |
| 6SH | 6" x 10' Suction Hose | \$30 | \$75 | \$200 |

CONFINED SPACE SAFETY EQUIPMENT



| Item # | Description | Day Rate | Week Rate | 4 Week Rate |
|--------|--------------------------|-----------------------|-----------|-------------|
| CSRS# | Rescue/Retrieval Tripod | \$80 | \$300 | \$750 |
| CSGM# | Gas Detector | \$75 | \$225 | \$450 |
| CALI | Gas Detector Calibration | \$35 each calibration | | |
| BUMP | Gas Detector Bump Test | \$35 each test | | |

BLOWERS & FANS



| Item # | Description | Day Rate | Week Rate | 4 Week Rate |
|--------|--|----------|-----------|-------------|
| EF# | Exhaust Fan (36") | \$25 | \$66 | \$180 |
| VB# | Ventilation Blower with Hose | \$25 | \$75 | \$225 |
| FD# | Floor Dryer | \$30 | \$90 | - |
| NAM# | HEPA Air Scrubber/Negative Air Machine | \$40 | \$120 | \$360 |

POST HOLE DIGGER AND POST DRIVER



| Item # | Description | Day Rate | Week Rate | 4 Week Rate |
|--------|--|----------|-----------|-------------|
| PHD2# | Post Hole Digger (8", 10", or 12" bit) | \$125 | \$375 | \$1125 |
| PHD# | Stihl One-Man Auger | \$50 | \$150 | \$400 |
| SA4 | 3.5" Stihl Auger Bit | \$10 | \$30 | \$90 |
| SA6 | 5.9" Stihl Auger Bit | \$10 | \$30 | \$90 |
| SA8 | 7.9" Stihl Auger Bit | \$10 | \$30 | \$90 |
| GPD# | Gas Post Driver | \$90 | \$270 | \$810 |

MINI EXCAVATORS



| Item # | Description | Day Rate | Week Rate | 4 Week Rate |
|--------|----------------------|----------|-----------|-------------|
| ME1# | 1 Ton Mini Excavator | \$350 | \$1,000 | \$3,000 |
| ME2# | 3 Ton Mini Excavator | \$400 | \$1,200 | \$3,500 |
| TRAC | 4x8 80 Ton Trackmat | \$20 | \$50 | \$150 |



sales@mqb.com
www.MQB.com

9



Utica, NY: 315•724•7119
Watertown, NY: 315•788•2612
Syracuse, NY: 315•671•4400

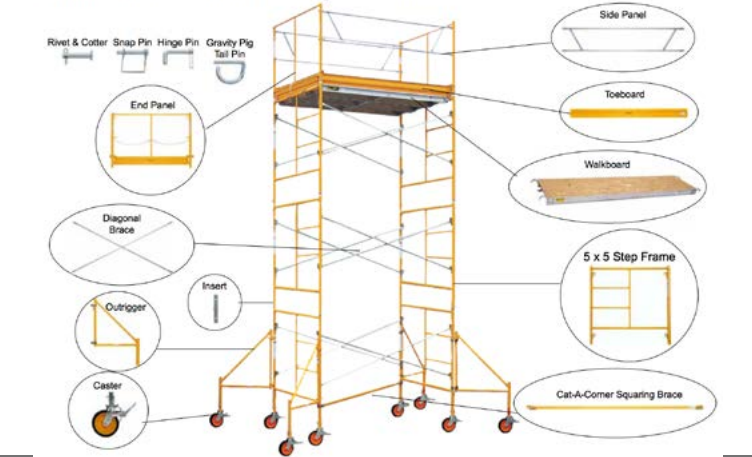
10

LIFTING / MOVING EQUIPMENT



| Item # | Description | Day Rate | Week Rate | 4 Week Rate |
|--------|----------------------------------|----------|-----------|-------------|
| DL# | 10' Drywall Lift | \$40 | \$100 | \$300 |
| DL14# | 14' Drywall Lift | \$50 | \$150 | \$450 |
| DWC# | Drywall Cart | \$25 | \$75 | \$225 |
| ML18# | 18' Material Lift - 650# | \$75 | \$225 | \$675 |
| LH# | Ladder/Platform Hoist - Gas, 28' | \$100 | \$300 | \$900 |
| PALT | 27" x 48" 6600 lb Pallet Truck | \$25 | \$75 | \$225 |

Know Your Scaffold / Safety / Decals



ALUMINUM STAGING PLANK / ACCESSORIES

| Item # | Description | Day Rate | Week Rate | 4 Week Rate |
|--------|-------------------------|----------|-----------|-------------|
| AP12# | 12" Wide Aluminum Picks | \$20 | \$60 | \$150 |
| AP20# | 20" Wide Aluminum Picks | \$25 | \$75 | \$175 |

BAKER SCAFFOLD & ACCESSORIES

| Item # | Description | 0-14 Day Rate | 15-28 Day Rate |
|--------|----------------------|---------------|----------------|
| BLF | Baker Ladder Frame | \$5 | \$8 |
| BB | Baker Brace | \$5 | \$8 |
| BDB | Baker Deck Board | \$8 | \$12 |
| AOU3 | 39" Add-On Unit | \$30 | \$45 |
| AOU5 | 60" Add-On Unit | \$30 | \$45 |
| WB4 | Wide Base Unit - Set | \$15 | \$30 |
| BOUTW | Outrigger | \$3 | \$6 |
| PG6 | 6' Panel Guard - Set | \$15 | \$25 |
| BC | Casters | \$3 | \$6 |

SCAFFOLDING

| Item # | Description | 0-14 Day Rate | 15-28 Day Rate |
|--------|---|---------------|----------------|
| WTF | Walk Thru Frame | \$6 | \$9 |
| WTSF | Walk Thru Step Frame | \$6 | \$9 |
| SF2X5 | Step Frame - 2' x 5' | \$6 | \$9 |
| SF3X5 | Step Frame - 3' x 5' | \$6 | \$9 |
| SF46X5 | Step Frame - 4'6" x 5' | \$6 | \$9 |
| SF66X5 | Step Frame - 6'6" x 5' | \$6 | \$9 |
| SF6X28 | Step Frame - 6' x 28" | \$6 | \$9 |
| SF3X28 | Step Frame - 3' x 28" | \$6 | \$9 |
| B127 | Brace - 2'/3' | \$3 | \$5 |
| B347 | Brace - Double Hole | \$3 | \$5 |
| SA20 | Side Arm Bracket | \$4 | \$7 |
| SAADJ | Adjustable Side Arm Bracket | \$4 | \$7 |
| CAS8 | Casters | \$6 | \$12 |
| SJ | Screw Jack | \$4 | \$7 |
| SJB | Screw Jack Bare | \$4 | \$7 |
| BP | Base Plate | \$2 | \$3 |
| PL2X8 | 8' Laminated Wood Plank | \$6 | \$10 |
| PL2X16 | 16' Laminated Wood Plank | \$6 | \$10 |
| AP7 | 7' x 19" Aluminum Frame Platform | \$10 | \$18 |
| AP287 | 7' x 28" Aluminum Frame Platform | \$16 | \$30 |
| APD287 | 7' x 28" Aluminum Frame Platform w/Door | \$16 | \$30 |
| AP10 | 10' x 19" Aluminum Frame Platform | \$25 | \$45 |
| EGPA5 | End Guard Rail Assembly | \$5 | \$10 |
| GP | Guard Post | \$2 | \$4 |
| GR5 | 5' Guard Rail | \$2 | \$4 |
| GR7 | 7' Guard Rail | \$2 | \$4 |
| TB2X5 | 2' x 5' Toe Board | \$2 | \$4 |
| TB2X7 | 2' x 7' Toe Board | \$2 | \$4 |
| STAB | Stabilizer | \$5 | \$10 |
| SAGR | Side Arm Guard Rail Assembly | \$3 | \$6 |
| PR | Platform Rest | \$2 | \$4 |
| ACCST | Access Stairway Pair | \$10 | \$20 |
| STRAIL | Stair Rail | \$10 | \$20 |
| CT | Canopy Top | \$4 | \$6 |
| CCB | Cat-A-Corner Brace | \$2 | \$4 |
| DG | Diagonal Gooser | \$2 | \$4 |
| HA-RS | Hoist Arm | \$4 | \$8 |
| WW | Well Wheel | \$10 | \$15 |
| HP2 | Hinge Pins | \$0.25 | \$0.50 |

TERMS & CONDITIONS

1. INSPECTION. Customer acknowledges that he has had an opportunity to personally inspect the equipment, and finds it suitable for his needs and in good condition, and that he understands its proper use. Customer further acknowledges his duty to inspect the equipment prior to use and notify Dealer of any defects.
2. REPLACEMENT OF MALFUNCTIONING EQUIPMENT. If the equipment becomes unsafe or in disrepair as a result of normal use, Customer agrees to discontinue use and notify Dealer who will replace the equipment with similar equipment in good working order, if available. Dealer is not responsible for any incidental or consequential damages caused by delays or otherwise.
3. WARRANTIES. THERE ARE NOT WARRANTIES OR MERCHANTABILITY OR FITNESS, EITHER EXPRESS OR IMPLIED. There is no warranty that the equipment is suited for Customer's intended use, or that it is free from defects.
4. HOLD HARMLESS AGREEMENT. Lessee agrees to indemnify and hold lessor free and harmless from any and all liability for loss, damage, or personal injury which results from non-compliance with any portion of this paragraph, or from non-compliance with any law, regulation or other safety order.
5. PROHIBITED USES. Use of the equipment in the following circumstances is prohibited, and constitutes a breach of this contract.
- a. Use for illegal purpose or in an illegal manner.
 - b. Use when the equipment is in bad repair or is unsafe.
 - c. Improper, unintended use or misuse.
 - d. Use by anyone other than the Customer or his employees, without Dealer's written permission
 - e. Use at any location other than the address furnished to the Dealer without Dealer's permission.
(Does not apply to mobile equipment.)
6. ASSIGNMENTS, SUBLEASES AND LOANS OF EQUIPMENT. Dealer may assign his rights under this contract without Customer's consent, but will remain bound by all obligations herein. Customer may not sublease or loan the equipment without Dealer's written permission. Any purported assignment by Customer is void.
7. TIME OF RETURN. Customer's right to possession terminates on the expiration of the rental period ("Due In" date & time) and retention of possession after this time constitutes a material breach of this contract. **Time is the essence of this contract.** Any extension must be mutually agreed upon in writing.
8. LATE RETURN. Customer agrees to return the rented goods during Dealer's regular store hours, upon expiration of the rental period ("Due In" date & time). Customer agrees that if the rented goods are held beyond the expiration of the rental period ("Due In" date & time) as designated in the contract, the daily rate as indicated on the contract shall be the agreed contractual rate for the entire period, notwithstanding any lesser periodic rate.
9. DAMAGED, DIRTY, OR LOST EQUIPMENT. Customer agrees to pay for any damage to or loss of the goods, as an insurer, regardless of cause, except reasonable wear and tear, while the goods are out of the possession of the Dealer. Customer also agrees to pay a reasonable cleaning charge for equipment returned dirty. Accrued rental charges cannot be applied against the purchase or cost of repair or damage, lost or stolen goods. Equipment lost, stolen or damaged beyond repair will be paid for at its current list price. The cost of repairs will be borne by Customer, whether performed by the Dealer, or, at Dealer's option, by others.
10. TIME OF PAYMENT. Accounts are due and payable at the termination of the rental period. A carrying charge of 1.5% per month (ANNUAL RATE OF 18%) will be charged on all overdue accounts.
11. COLLECTION COSTS. Customer agrees to pay all reasonable collection, attorney's and court fees and other expenses involved in the collection of the charges or enforcement of Dealer's rights under this contract.
12. REPOSSESSION. Upon a failure to pay rent or other breach of this contract, Dealer may terminate this contract and take possession of and remove the goods from wherever they are, and Dealer and his agents shall not be liable for any claims for damage or trespass arising out of the removal of the goods.
13. INSPECTION OF TRAILER HITCH. Customer agrees to inspect the trailer coupling mechanism and safety chain before leaving Dealer's premises. Customer also agrees to inspect the equipment periodically (every 100 miles) and to maintain the coupling and chain in a safe and secure condition.
14. DAMAGE TO BUMPERS. Dealer is not liable for damage to Customer's bumper or automobile done by detachable hitches, towbars or other detachable equipment.
15. SEVERABILITY. The provisions of this contract shall be severable so that the invalidity, unenforceability or waiver of any of the provisions shall not affect the remaining provisions.
16. LOADING AND UNLOADING EQUIPMENT. Customer is responsible for loading and unloading equipment. If Dealer's employees assist in loading or unloading the equipment, Customer agrees to assume the risk of, and hold Dealer and/or its employees harmless for any property damage or personal injuries, including damage and personal injuries attributable to the negligence of Dealer and/or its employees.
17. SAFETY REGULATIONS. LESSEE SHALL: (1) erect, maintain and use the leased equipment in a safe and proper manner; (2) comply with all applicable laws, ordinances, rules, regulation and orders of any public authority, including, but not limited to, ALL FEDERAL OCCUPATIONAL SAFETY AND HEALTH ACT (OSHA) and State regulations having jurisdiction for the safety of persons or property; and (3) comply with any rules or regulations promulgated by lesser with respect to the leased equipment, its manner of erection and use. Lessee acknowledges receipt of Lessor's Operating Instructions and/or Code of Safe Practices, and agrees that Lessee and all Lessee's employees will AT MINIMUM comply with this provision and all other safety provisions described herein.



Construction / Industrial Tools & Supplies

Got Questions?

Give us a call
or

E-mail us at

sales@MQB.com

A fourth generation family-owned business, McQuade & Bannigan has offered its customers a wide variety of industrial and construction supplies for over 100 years.

Rental, sales and service of equipment is available at all locations.



Utica

1300 Stark St.

(Corner of Rt.12 and Noyes St.)

Utica, NY 13502

Phone: (315) 724-7119

Fax: (315) 724-0171



Watertown

22696 Murrock Cir.

Bradley St. Commerce Park

Watertown, NY 13601

Phone: (315) 788-2612

Fax: (315) 788-0361



Syracuse

6300 E. Molloy Rd.

East Syracuse, NY 13057

Phone: (315) 671-4400

Fax: (315) 671-4404